

For Research Use Only

# IL-11 Monoclonal antibody, PBS Only (Detector)

Catalog Number: 68135-1-PBS



## Basic Information

<b>Catalog Number:</b> 68135-1-PBS	<b>GenBank Accession Number:</b> BC012506	<b>Purification Method:</b> Protein A purification
<b>Size:</b> 1000 ug/ml	<b>GeneID (NCBI):</b> 3589	<b>CloneNo.:</b> 1F3A12
<b>Source:</b> Mouse	<b>UNIPROT ID:</b> P20809	<b>Affinity:</b> $K_D = 1.80 \times 10^{-9}$
<b>Isotype:</b> IgG2b	<b>Full Name:</b> interleukin 11	$K_{off} = 2.20 \times 10^{-6}$
<b>Immunogen Catalog Number:</b> AG11199	<b>Calculated MW:</b> 199 aa, 21 kDa	$K_{on} = 1.22 \times 10^3$
	<b>Observed MW:</b> 21 kDa	

## Applications

**Tested Applications:**  
WB, Cytometric bead array, Sandwich ELISA, Indirect ELISA, Sample test

**Species Specificity:**  
human

## Background Information

Interleukin-11 (IL-11) is a member of the glycoprotein-130 (GP-130) cytokines that utilizes the GP-130 signaling pathway shared by other cytokines of the same family. The most well-known role of IL-11 is in hematopoiesis because it promotes megakaryocytopoiesis, erythropoiesis, and thrombopoiesis. In recognition of these properties, human IL-11 recombinant protein (rhIL-11) is used clinically for treating chemotherapy-induced thrombocytopenia. IL-11 has extensive immunomodulatory effects, both anti- and proinflammatory.

## Storage

**Storage:**  
Store at -80°C.  
**The product is shipped with ice packs. Upon receipt, store it immediately at -80°C**

**Storage Buffer:**  
PBS Only

For technical support and original validation data for this product please contact:

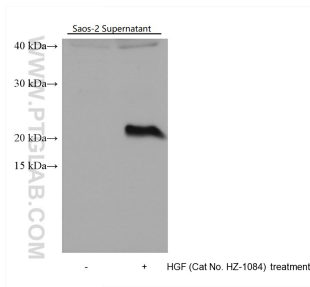
T: 4006900926

E: [Proteintech-CN@ptglab.com](mailto:Proteintech-CN@ptglab.com)

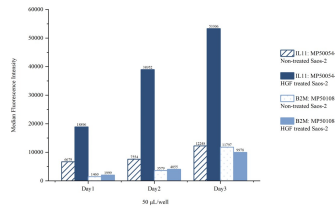
W: [ptgcn.com](http://ptgcn.com)

**This product is exclusively available under Proteintech Group brand and is not available to purchase from any other manufacturer.**

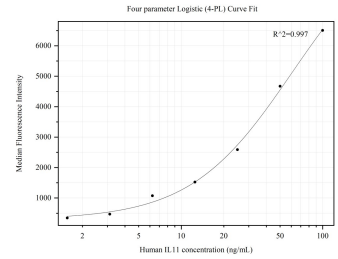
# Selected Validation Data



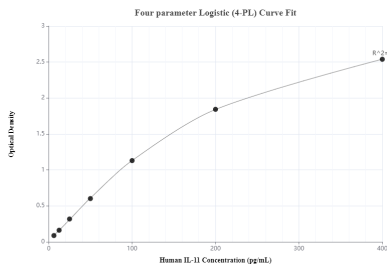
Saos-2 cell supernatant (cells stimulated with 500ng/mL HGF for 4 days) were subjected to SDS PAGE followed by western blot with 68135-1-Ig (IL-11 antibody) at dilution of 1:12000 incubated at room temperature for 1.5 hours. This data was developed using the same antibody clone with 68135-1-PBS in a different storage buffer formulation.



Cytometric bead array of Saos-2 cells supernatant using MP50054-1, IL11 Monoclonal Matched Antibody Pair, PBS Only. Capture antibody: 68135-2-PBS. Detection antibody: 68135-1-PBS. Saos-2 cells were inoculated into 6 well plate at 40000 cells/well followed by culture for 3 days in normal culture media or HGF (Cat.NO. HZ-1084, 500 ng/mL) containing media. 50  $\mu$  L of the supernatant from each day was analyzed using MP50054-1 (IL11 Monoclonal Matched



Cytometric bead array standard curve of MP50054-1, IL11 Monoclonal Matched Antibody Pair, PBS Only. Capture antibody: 68135-2-PBS. Detection antibody: 68135-1-PBS. Standard: Ag11199. Range: 1.563-100 ng/mL



Sandwich ELISA standard curve of MP50054-1, IL11 Monoclonal Matched Antibody Pair - PBS only. 68135-2-PBS was coated to a plate as the capture antibody and incubated with serial dilutions of standard Ag11199. 68135-1-PBS was biotinylated as the detection antibody. Range: 6.25-400 pg/mL