

For Research Use Only

# UBE2D1/2/3/4 Monoclonal antibody, PBS Only



Catalog Number: 68138-1-PBS

## Basic Information

Catalog Number:

68138-1-PBS

Size:

1 mg/ml

Source:

Mouse

Isotype:

IgG1

Immunogen Catalog Number:

AG2278

GenBank Accession Number:

BC003395

GeneID (NCBI):

7323

UNIPROT ID:

P61077

Full Name:

ubiquitin-conjugating enzyme E2D 3

(UBC4/5 homolog, yeast)

Calculated MW:

17 kDa

Observed MW:

17 kDa

Purification Method:

Protein A purification

CloneNo.:

1C7D12

## Applications

Tested Applications:

WB, Indirect ELISA, IF

Species Specificity:

Human, Mouse, Rat

## Background Information

Ubiquitination is a post-translational modification pathway or is part of the specific protein-degradation pathway by the 26S proteasome. Ubiquitination of a target protein involves multistep enzymatic reaction catalyzed by a cascade of enzymes including Ub-activating enzymes (E1s), Ub-conjugating enzymes (E2s) and Ub ligases (E3s) (PMID: 23542885). UBE2D family, which has 4 members named as UBE2D1/2/3/4, is an E2 ubiquitin-conjugating enzyme family in the ubiquitin-proteasome system. This antibody can recognize all the four members of UBE2D due to the high homology.

## Storage

Storage:

Store at -80°C.

Storage Buffer:

PBS Only

For technical support and original validation data for this product please contact:

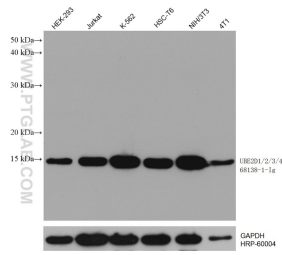
T: 4006900926

E: [Proteintech-CN@ptglab.com](mailto:Proteintech-CN@ptglab.com)

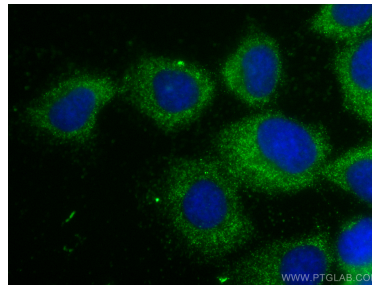
W: [ptgcn.com](http://ptgcn.com)

This product is exclusively available under Proteintech Group brand and is not available to purchase from any other manufacturer.

## Selected Validation Data



Various lysates were subjected to SDS PAGE followed by western blot with 68138-1-Ig (UBE2D3 antibody) at dilution of 1:10000 incubated at room temperature for 1.5 hours. The membrane was stripped and reblotted with HRP-conjugated GAPDH Monoclonal antibody (HRP-60004) as loading control. This data was developed using the same antibody clone with 68138-1-PBS in a different storage buffer formulation.



Immunofluorescent analysis of (-20°C Methanol) fixed A431 cells using UBE2D1/2/3/4 antibody (68138-1-Ig, Clone: 1C7D12) at dilution of 1:800 and CoraLite® 488-Conjugated AffiniPure Goat Anti-Mouse IgG(H+L). This data was developed using the same antibody clone with 68138-1-PBS in a different storage buffer formulation.