

For Research Use Only

# ENO3 Monoclonal antibody

Catalog Number: 68147-1-Ig



## Basic Information

<b>Catalog Number:</b> 68147-1-Ig	<b>GenBank Accession Number:</b> BC017249	<b>Purification Method:</b> Protein A purification
<b>Size:</b> 1000 µg/ml	<b>GeneID (NCBI):</b> 2027	<b>CloneNo.:</b> 2C12G3
<b>Source:</b> Mouse	<b>UNIPROT ID:</b> P13929	<b>Recommended Dilutions:</b> WB 1:5000-1:50000 IF/ICC 1:200-1:800
<b>Isotype:</b> IgG2b	<b>Full Name:</b> enolase 3 (beta, muscle)	
<b>Immunogen Catalog Number:</b> AG9642	<b>Calculated MW:</b> 434 aa, 47 kDa	
	<b>Observed MW:</b> 42-47 kDa	

## Applications

<b>Tested Applications:</b> IF/ICC, WB, ELISA	<b>Positive Controls:</b>
<b>Species Specificity:</b> Human, Mouse, Rat, Pig	<b>WB :</b> HeLa cells, HEK-293 cells, HepG2 cells, Jurkat cells, pig skeletal muscle tissue, rabbit skeletal muscle tissue, rat skeletal muscle tissue, mouse skeletal muscle tissue, mouse brain tissue
	<b>IF/ICC :</b> HeLa cells,

## Background Information

Enolase 3 (ENO3) encodes the  $\beta$ -subunit of enolase, which is distributed in various tissues, including liver, lung, skeletal, and heart. ENO3 plays an important role in both glycogen and cholesterol metabolism. It has been demonstrated that ENO3 deficiency may lead to metabolic myopathies, and ENO3 speeds up hepatic cholesterol ester cumulation induced via the mediation of cholesteryl ester generation. Apart from these, ENO3 has also been involved in various tumors, though the results are contradictory. For example, ENO3 is up-regulated in STK11 mutant pulmonary carcinoma and colorectal carcinoma, while down-regulated in pancreatic cancer and hepatocellular carcinomas. ENO3 has 3 isoforms with the molecular mass of 42-47 kDa. (PMID: 33987359, 35004693)

## Storage

**Storage:**  
Store at -20°C. Stable for one year after shipment.  
**Storage Buffer:**  
PBS with 0.02% sodium azide and 50% glycerol pH 7.3.  
**Aliquoting is unnecessary for -20°C storage**

For technical support and original validation data for this product please contact:

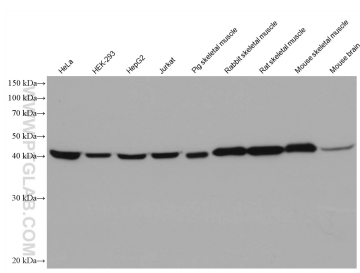
T: 4006900926

E: [Proteintech-CN@ptglab.com](mailto:Proteintech-CN@ptglab.com)

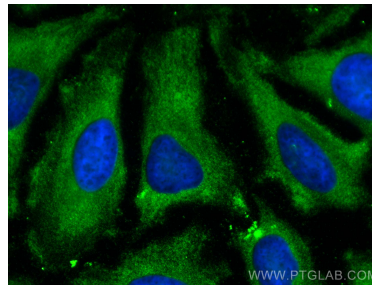
W: [ptgcn.com](http://ptgcn.com)

**This product is exclusively available under Proteintech Group brand and is not available to purchase from any other manufacturer.**

## Selected Validation Data



Various lysates were subjected to SDS PAGE followed by western blot with 68147-1-Ig (ENO3 antibody) at dilution of 1:10000 incubated at room temperature for 1.5 hours.



Immunofluorescent analysis of (-20°C Methanol) fixed HeLa cells using ENO3 antibody (68147-1-Ig, Clone: 2C12G3) at dilution of 1:400 and CoraLite®488-Conjugated AffiniPure Goat Anti-Mouse IgG(H+L).