

For Research Use Only

LANCL1 Monoclonal antibody, PBS Only



Catalog Number: 68160-1-PBS

Basic Information

Catalog Number: 68160-1-PBS	GenBank Accession Number: BC028685	Purification Method: Protein G purification
Size: 1 mg/ml	GeneID (NCBI): 10314	CloneNo.: 2H6E8
Source: Mouse	UNIPROT ID: O43813	
Isotype: IgG1	Full Name: LanC lantibiotic synthetase component C-like 1 (bacterial)	
Immunogen Catalog Number: AG32665	Calculated MW: 399 aa, 45 kDa	
	Observed MW: 40 kDa	

Applications

Tested Applications:
WB,IP,Indirect ELISA,IF

Species Specificity:
Human, mouse, rat, pig

Background Information

LanCL1 (also known as P40 or GRP69A), is homologous to bacterial lanthionine synthetase C (LanC) family, which is involved in the biosynthesis of antimicrobial peptides (lantibiotics). LanCL1 was identified as a reduced glutathione (GSH)-binding protein and primarily expressed in neural tissues and testis.

Storage

Storage:
Store at -80°C.
The product is shipped with ice packs. Upon receipt, store it immediately at -80°C

Storage Buffer:
PBS Only

For technical support and original validation data for this product please contact:

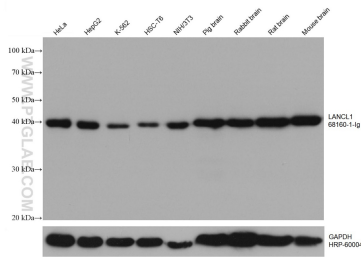
T: 4006900926

E: Proteintech-CN@ptglab.com

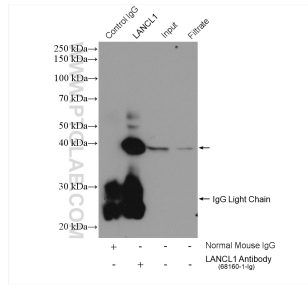
W: ptgcn.com

This product is exclusively available under Proteintech Group brand and is not available to purchase from any other manufacturer.

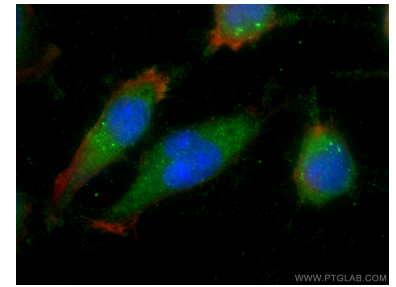
Selected Validation Data



Various lysates were subjected to SDS PAGE followed by western blot with 68160-1-Ig (LANCL1 antibody) at dilution of 1:10000 incubated at room temperature for 1.5 hours. The membrane was stripped and reblotted with HRP-conjugated GAPDH Monoclonal antibody (HRP-60004) as loading control. This data was developed using the same antibody clone with 68160-1-PBS in a different storage buffer formulation.



IP result of anti-LANCL1 (IP:68160-1-Ig, 5ug; Detection:68160-1-Ig 1:2000) with mouse brain tissue lysate 1600 ug. This data was developed using the same antibody clone with 68160-1-PBS in a different storage buffer formulation.



Immunofluorescent analysis of (-20°C Ethanol) fixed U-251 cells using LANCL1 antibody (68160-1-Ig, Clone: 2H6E8) at dilution of 1:800 and CoraLite@488-Conjugated AffiniPure Goat Anti-Mouse IgG(H+L), CL594-Phalloidin (red). This data was developed using the same antibody clone with 68160-1-PBS in a different storage buffer formulation.