

For Research Use Only

# TCEB1 Monoclonal antibody

Catalog Number: 68164-1-Ig **1 Publications**



## Basic Information

<b>Catalog Number:</b> 68164-1-Ig	<b>GenBank Accession Number:</b> BC013809	<b>Purification Method:</b> Protein A purification
<b>Size:</b> 1000 µg/ml	<b>GeneID (NCBI):</b> 6921	<b>CloneNo.:</b> 2D6D8
<b>Source:</b> Mouse	<b>UNIPROT ID:</b> Q15369	<b>Recommended Dilutions:</b> WB 1:5000-1:50000 IF 1:400-1:1600
<b>Isotype:</b> IgG1	<b>Full Name:</b> transcription elongation factor B (SIII), polypeptide 1 (15kDa, elongin C)	
<b>Immunogen Catalog Number:</b> AG22601	<b>Calculated MW:</b> 112 aa, 12 kDa	
	<b>Observed MW:</b> 12 kDa	

## Applications

<b>Tested Applications:</b> IF/ICC, WB, ELISA	<b>Positive Controls:</b>
<b>Cited Applications:</b> WB	<b>WB :</b> LNCaP cells, HeLa cells, HEK-293 cells, Jurkat cells, K-562 cells, HSC-T6 cells, NIH/3T3 cells, rat brain tissue, mouse brain tissue
<b>Species Specificity:</b> Human, mouse, rat	<b>IF :</b> T-47D cells,
<b>Cited Species:</b> human	

## Background Information

TCEB1, also named as RNA polymerase II transcription factor SIII subunit C, belongs to the SKP1 family. It mediates the ubiquitination of ECS-E3 ubiquitin-protein ligase complexes. TCEB1 is overexpressed in prostate cancer cell line PC-3 and breast cancer cell line SK-BR-3. TCEB1 also promotes invasion of prostate cancer cells (PMID:18844214).

## Notable Publications

Author	Pubmed ID	Journal	Application
Mingchao Mu	37816999	Cell Death Differ	WB

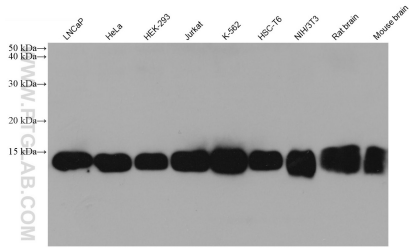
## Storage

**Storage:**  
Store at -20°C. Stable for one year after shipment.  
**Storage Buffer:**  
PBS with 0.02% sodium azide and 50% glycerol pH 7.3.  
Aliquoting is unnecessary for -20°C storage

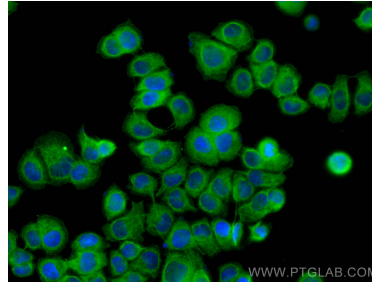
For technical support and original validation data for this product please contact:  
T: 4006900926 E: Proteintech-CN@ptglab.com W: ptgcn.com

This product is exclusively available under Proteintech Group brand and is not available to purchase from any other manufacturer.

## Selected Validation Data



Various lysates were subjected to SDS PAGE followed by western blot with 68164-1-Ig (TCEB1 antibody) at dilution of 1:10000 incubated at room temperature for 1.5 hours.



Immunofluorescent analysis of (-20°C Methanol) fixed T-47D cells using TCEB1 antibody (68164-1-Ig, Clone: 2D6D8) at dilution of 1:800 and CoraLite®488-Conjugated AffiniPure Goat Anti-Mouse IgG(H+L).