

For Research Use Only

BLVRA Monoclonal antibody

Catalog Number: 68175-1-Ig



Basic Information

Catalog Number:

68175-1-Ig

Size:

1000 ug/ml

Source:

Mouse

Isotype:

IgG1

Immunogen Catalog Number:

AG32730

GenBank Accession Number:

BC008456

GeneID (NCBI):

644

UNIPROT ID:

P53004

Full Name:

biliverdin reductase A

Calculated MW:

33.2 kDa

Observed MW:

37-40 kDa, 66 kDa

Purification Method:

Protein G purification

CloneNo.:

2A10F2

Recommended Dilutions:

WB 1:5000-1:50000

IF/ICC 1:200-1:800

Applications

Tested Applications:

WB, IF/ICC, ELISA

Species Specificity:

human

Positive Controls:

WB : L02 cells, DU 145 cells, U2OS cells, HeLa cells, HEK-293 cells, HepG2 cells, Jurkat cells

IF/ICC : A549 cells,

Background Information

BLVRA (Biliverdin reductase A) is also named BLVR, BVR, and belongs to the biliverdin reductase subfamily. It catalyzes the conversion of biliverdin to bilirubin in the presence of NADPH or NADH. This protein can exist as a dimer (PMID:11773068). Defects in BLVRA are the cause of hyperbiliverdinemia (HBLVD).

Storage

Storage:

Store at -20°C. Stable for one year after shipment.

Storage Buffer:

PBS with 0.02% sodium azide and 50% glycerol pH 7.3.

Aliquoting is unnecessary for -20°C storage

For technical support and original validation data for this product please contact:

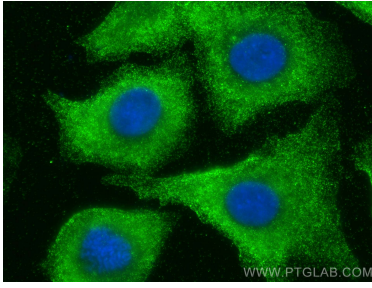
T: 4006900926

E: Proteintech-CN@ptglab.com

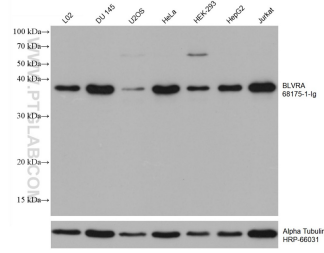
W: ptgcn.com

This product is exclusively available under Proteintech Group brand and is not available to purchase from any other manufacturer.

Selected Validation Data



Immunofluorescent analysis of (-20°C Methanol) fixed A549 cells using BLVRA antibody (68175-1-Ig, Clone: 2A10F2) at dilution of 1:400 and CoraLite@488-Conjugated AffiniPure Goat Anti-Mouse IgG(H+L) (SA00013-1).



Various lysates were subjected to SDS PAGE followed by western blot with 68175-1-Ig (BLVRA antibody) at dilution of 1:20000 incubated at room temperature for 1.5 hours. The membrane was stripped and reblotted with HRP-conjugated Alpha Tubulin Monoclonal antibody (HRP-66031) as loading control.