

For Research Use Only

COMT Monoclonal antibody, PBS Only



Catalog Number: 68181-1-PBS

Basic Information

Catalog Number: 68181-1-PBS	GenBank Accession Number: BC000419	Purification Method: Protein G purification
Size: 1 mg/ml	GeneID (NCBI): 1312	CloneNo.: 1A1A4
Source: Mouse	UNIPROT ID: P21964	
Isotype: IgG1	Full Name: catechol-O-methyltransferase	
Immunogen Catalog Number: AG6502	Calculated MW: 30 kDa	
	Observed MW: 28-30 kDa	

Applications

Tested Applications:
WB, IF, Indirect ELISA

Species Specificity:
Human, pig, rat, mouse

Background Information

Catechol O-methyltransferase (COMT) is an important enzyme that catalyzes O-methylation and inactivation of metabolically active catechol-containing bioactive molecules and drugs. The mammalian COMT enzyme exists in soluble form (24-26 kDa) and membrane-bound form (28-30 kDa), which are encoded by a single gene utilizing different promoters.

Storage

Storage:
Store at -80°C.

Storage Buffer:
PBS Only

For technical support and original validation data for this product please contact:

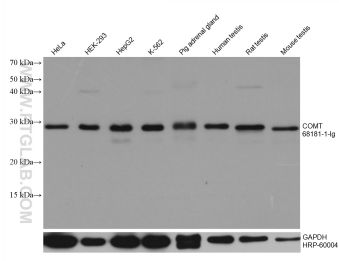
T: 4006900926

E: Proteintech-CN@ptglab.com

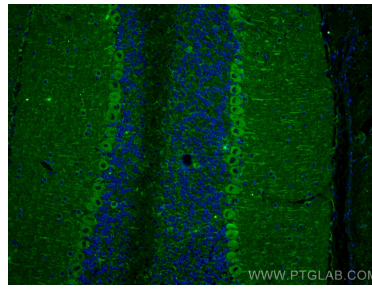
W: ptgcn.com

This product is exclusively available under Proteintech Group brand and is not available to purchase from any other manufacturer.

Selected Validation Data



Various lysates were subjected to SDS PAGE followed by western blot with 68181-1-Ig (COMT antibody) at dilution of 1:10000 and incubated at room temperature for 1.5 hours. The membrane was stripped and reblotted with HRP-conjugated GAPDH Monoclonal antibody (HRP-60004) as loading control. This data was developed using the same antibody clone with 68181-1-PBS in a different storage buffer formulation.



Immunofluorescent analysis of (4% PFA) fixed mouse cerebellum tissue using COMT antibody (68181-1-Ig, Clone: 1A1A4) at dilution of 1:400 and CoraLite®488-Conjugated AffiniPure Goat Anti-Mouse IgG(H+L). This data was developed using the same antibody clone with 68181-1-PBS in a different storage buffer formulation.