

For Research Use Only

CYP2S1 Monoclonal antibody, PBS Only (Capture)

Catalog Number: 68198-1-PBS



Basic Information

Catalog Number: 68198-1-PBS	GenBank Accession Number: BC033691	Purification Method: Protein G purification
Size: 1mg/ml	GeneID (NCBI): 29785	CloneNo.: 3E5D4
Source: Mouse	UNIPROT ID: Q96SQ9	
Isotype: IgG1	Full Name: cytochrome P450, family 2, subfamily S, polypeptide 1	
Immunogen Catalog Number: AG4605	Calculated MW: 504 aa, 56 kDa	
	Observed MW: 50-56 kDa	

Applications

Tested Applications:
WB, Cytometric bead array, Indirect ELISA

Species Specificity:
human, pig

Background Information

The cytochrome P450 (CYP) family of isoenzymes are involved in the metabolism of diverse endogenous compounds and detoxification of exogenous agents. Cytochrome P450 2S1 (CYP2S1) is one 'orphan' CYP, and is particularly expressed in epithelial cells of tissues which are exposed to the environment such as the skin, respiratory, gastrointestinal, and urinary tracts. CYP2S1 is associated primarily with the synthesis and metabolism of lipids including prostaglandins (PGE2) and retinoids. In addition, CYP2S1 expression is associated with patient survival in breast cancer.

Storage

Storage:
Store at -80°C.
The product is shipped with ice packs. Upon receipt, store it immediately at -80°C

Storage Buffer:
PBS Only

For technical support and original validation data for this product please contact:

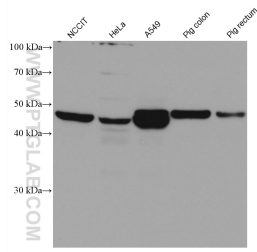
T: 4006900926

E: Proteintech-CN@ptglab.com

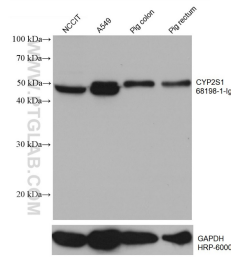
W: ptgcn.com

This product is exclusively available under Proteintech Group brand and is not available to purchase from any other manufacturer.

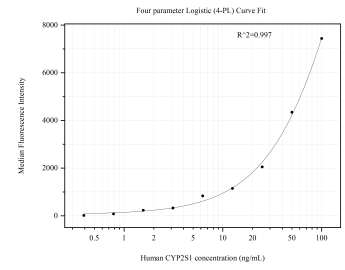
Selected Validation Data



Various lysates were subjected to SDS PAGE followed by western blot with 68198-1-Ig (CYP2S1 antibody) at dilution of 1:5000 incubated at room temperature for 1.5 hours. This data was developed using the same antibody clone with 68198-1-PBS in a different storage buffer formulation.



Various lysates were subjected to SDS PAGE followed by western blot with 68198-1-Ig (CYP2S1 antibody) at dilution of 1:5000 incubated at room temperature for 1.5 hours. The membrane was stripped and reblotted with HRP-conjugated GAPDH Monoclonal antibody (HRP-60004) as loading control. This data was developed using the same antibody clone with 68198-1-PBS in a different storage buffer formulation.



Cytometric bead array standard curve of MP50889-4, CYP2S1 Monoclonal Matched Antibody Pair, PBS Only. Capture antibody: 68198-1-PBS. Detection antibody: 68198-6-PBS. Standard: Ag4605. Range: 0.391-100 ng/mL.