

For Research Use Only

CSNK2A1 Monoclonal antibody, PBS Only



Catalog Number: 68200-1-PBS

Basic Information

Catalog Number: 68200-1-PBS	GenBank Accession Number: BC011668	Purification Method: Protein G purification
Size: 1 mg/ml	GeneID (NCBI): 1457	CloneNo.: 1D5E8
Source: Mouse	UNIPROT ID: P68400	
Isotype: IgG1	Full Name: casein kinase 2, alpha 1 polypeptide	
Immunogen Catalog Number: AG29062	Calculated MW: 45 kDa	
	Observed MW: 40-45 kDa	

Applications

Tested Applications:
WB, Indirect ELISA

Species Specificity:
Human, Rabbit

Background Information

CSNK2A1 (Casein kinase II subunit alpha) is also named as CK2A1 and belongs to the CK2 subfamily. The CSNK2A1 gene contains 8 exons whose sequences comprise bases 102 to 824 of the coding region of the human casein kinase II alpha subunit. Casein kinase II is a ubiquitous protein-serine/threonine kinase in eukaryotic cells that catalyzes the phosphorylation of many protein substrates and has been regarded as a second-messenger-independent protein kinase. This enzyme is composed of an α subunit (37 to 44 kDa) and a β subunit (24 to 28 kDa) and exists as an $\alpha 2 \beta 2$ tetramer (PMID:1448100). Casein kinase 2 has been found to be increased at protein level and up-regulated at the level of enzyme activity in the majority of cancers. However, elevated levels of casein kinase 2 are present in certain normal organs such as brain and testes.

Storage

Storage:
Store at -80°C .

Storage Buffer:
PBS Only

For technical support and original validation data for this product please contact:

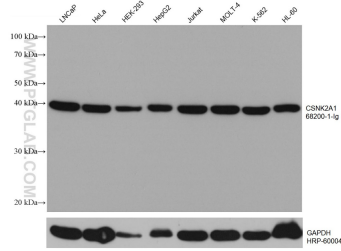
T: 4006900926

E: Proteintech-CN@ptglab.com

W: ptgcn.com

This product is exclusively available under Proteintech Group brand and is not available to purchase from any other manufacturer.

Selected Validation Data



Various lysates were subjected to SDS PAGE followed by western blot with 68200-1-Ig (CSNK2A1 antibody) at dilution of 1:20000 incubated at room temperature for 1.5 hours. The membrane was stripped and reblotted with HRP-conjugated GAPDH Monoclonal antibody (HRP-60004) as loading control. This data was developed using the same antibody clone with 68200-1-PBS in a different storage buffer formulation.