

For Research Use Only

# PSMA4 Monoclonal antibody, PBS Only



Catalog Number: 68203-1-PBS

## Basic Information

<b>Catalog Number:</b> 68203-1-PBS	<b>GenBank Accession Number:</b> BC056249	<b>Purification Method:</b> Protein A purification
<b>Size:</b> 1 mg/ml	<b>GeneID (NCBI):</b> 5685	<b>CloneNo.:</b> 2E6E4
<b>Source:</b> Mouse	<b>UNIPROT ID:</b> P25789	
<b>Isotype:</b> IgG2b	<b>Full Name:</b> proteasome (prosome, macropain) subunit, alpha type, 4	
<b>Immunogen Catalog Number:</b> AG32626	<b>Calculated MW:</b> 237 aa, 27 kDa	
	<b>Observed MW:</b> 29 kDa	

## Applications

**Tested Applications:**  
WB, Indirect ELISA, IHC, IF

**Species Specificity:**  
Human, Pig, Rabbit, Rat, Mouse

## Background Information

### Storage

**Storage:**  
Store at -80°C.  
**Storage Buffer:**  
PBS Only

For technical support and original validation data for this product please contact:

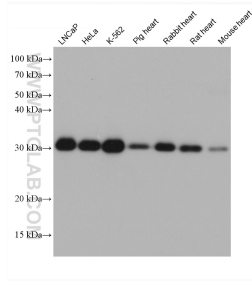
T: 4006900926

E: [Proteintech-CN@ptglab.com](mailto:Proteintech-CN@ptglab.com)

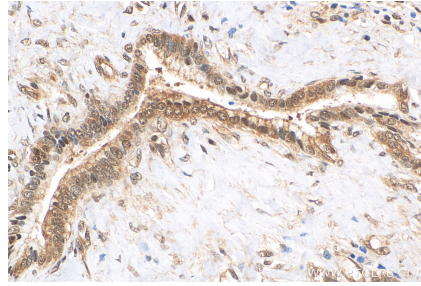
W: [ptgcn.com](http://ptgcn.com)

This product is exclusively available under Proteintech Group brand and is not available to purchase from any other manufacturer.

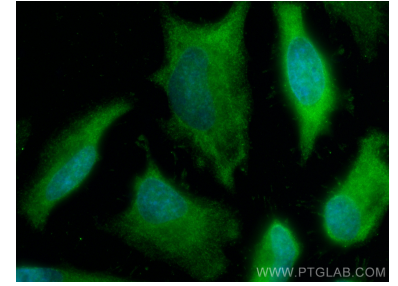
## Selected Validation Data



Various lysates were subjected to SDS PAGE followed by western blot with 68203-1-Ig (PSMA4 antibody) at dilution of 1:20000 incubated at room temperature for 1.5 hours. This data was developed using the same antibody clone with 68203-1-PBS in a different storage buffer formulation.



Immunohistochemical analysis of paraffin-embedded human pancreas cancer tissue slide using 68203-1-Ig (PSMA4 antibody) at dilution of 1:2000 (under 40x lens). Heat mediated antigen retrieval with Tris-EDTA buffer (pH 9.0). This data was developed using the same antibody clone with 68203-1-PBS in a different storage buffer formulation.



Immunofluorescent analysis of (-20°C Ethanol) fixed HeLa cells using PSMA4 antibody (68203-1-Ig, Clone: 2E6E4) at dilution of 1:400 and CoraLite®488-Conjugated AffiniPure Goat Anti-Mouse IgG(H+L). This data was developed using the same antibody clone with 68203-1-PBS in a different storage buffer formulation.