

For Research Use Only

NCAM2 Monoclonal antibody, PBS Only



Catalog Number: 68205-1-PBS

Basic Information

Catalog Number: 68205-1-PBS	GenBank Accession Number: BC052946	Purification Method: Protein A purification
Size: 1 mg/ml	GeneID (NCBI): 4685	CloneNo.: 1D6C12
Source: Mouse	UNIPROT ID: O15394	
Isotype: IgG2b	Full Name: neural cell adhesion molecule 2	
Immunogen Catalog Number: AG4935	Calculated MW: 93 kDa	
	Observed MW: 93 kDa, 125 kDa	

Applications

Tested Applications:
WB, Indirect ELISA, IF

Species Specificity:
Human, Rabbit, Mouse, Rat

Background Information

Storage

Storage:
Store at -80°C.
The product is shipped with ice packs. Upon receipt, store it immediately at -80°C

Storage Buffer:
PBS Only

For technical support and original validation data for this product please contact:

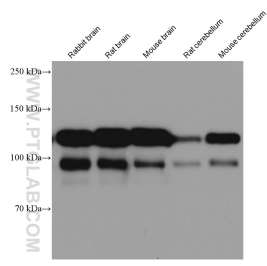
T: 4006900926

E: Proteintech-CN@ptglab.com

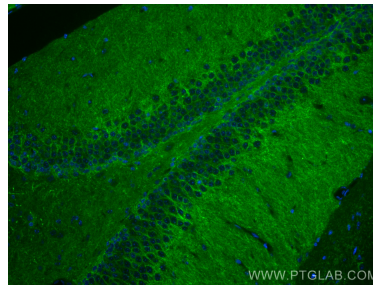
W: ptgcn.com

This product is exclusively available under Proteintech Group brand and is not available to purchase from any other manufacturer.

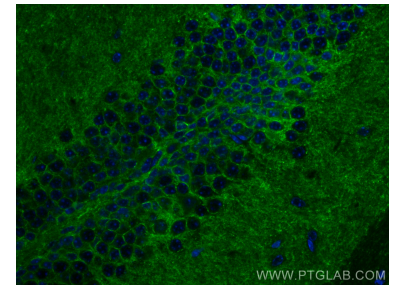
Selected Validation Data



Various lysates were subjected to SDS PAGE followed by western blot with 68205-1-Ig (NCAM2 antibody) at dilution of 1:10000 incubated at room temperature for 1.5 hours. This data was developed using the same antibody clone with 68205-1-PBS in a different storage buffer formulation.



Immunofluorescent analysis of (4% PFA) fixed mouse brain tissue using NCAM2 antibody (68205-1-Ig, Clone: 1D6C12) at dilution of 1:200 and CoraLite® 488-Conjugated AffiniPure Goat Anti-Mouse IgG(H+L). This data was developed using the same antibody clone with 68205-1-PBS in a different storage buffer formulation.



Immunofluorescent analysis of (4% PFA) fixed mouse brain tissue using NCAM2 antibody (68205-1-Ig, Clone: 1D6C12) at dilution of 1:200 and CoraLite® 488-Conjugated AffiniPure Goat Anti-Mouse IgG(H+L). This data was developed using the same antibody clone with 68205-1-PBS in a different storage buffer formulation.