

For Research Use Only

CAP1 Monoclonal antibody, PBS Only



Catalog Number: 68207-1-PBS

Basic Information

Catalog Number: 68207-1-PBS	GenBank Accession Number: BC013963	Purification Method: Protein G purification
Size: 1 mg/ml	GeneID (NCBI): 10487	CloneNo.: 2H3A10
Source: Mouse	UNIPROT ID: Q01518	
Isotype: IgG1	Full Name: CAP, adenylate cyclase-associated protein 1 (yeast)	
Immunogen Catalog Number: AG8876	Calculated MW: 475 aa, 52 kDa	
	Observed MW: 52 kDa	

Applications

Tested Applications:
WB, Indirect ELISA, IHC, IF

Species Specificity:
Human, mouse, rat, pig, rabbit

Background Information

CAP1, also known as CAP, CAP1-PEN, belongs to the CAP family and contains 1 C-CAP/cofactor C-like domain. CAP1 binds to monomeric actin and regulates the actin cytoskeleton to control cell size, adhesion, and migration (PMID: 23737525). CAP1 also functions as a receptor for inflammatory cytokine resistin (PMID: 24606903). CAP1 is an abundant and ubiquitously expressed protein. Western blot analysis detected CAP1 at an apparent molecular mass of 52 kDa.

Storage

Storage:
Store at -80°C.
The product is shipped with ice packs. Upon receipt, store it immediately at -80°C

Storage Buffer:
PBS Only

For technical support and original validation data for this product please contact:

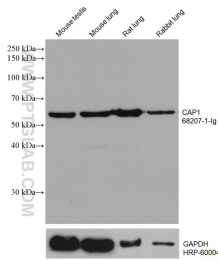
T: 4006900926

E: Proteintech-CN@ptglab.com

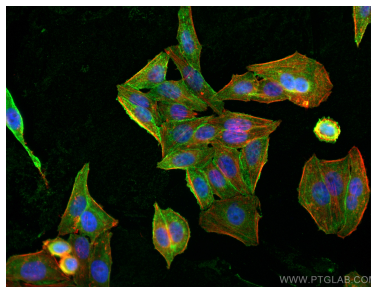
W: ptgcn.com

This product is exclusively available under Proteintech Group brand and is not available to purchase from any other manufacturer.

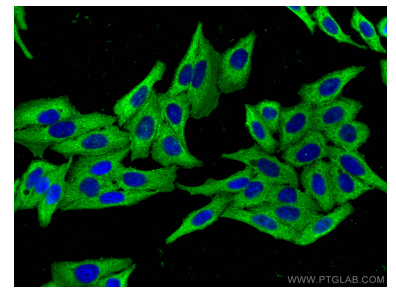
Selected Validation Data



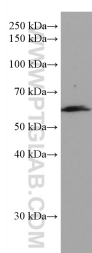
Various lysates were subjected to SDS PAGE followed by western blot with 68207-1-Ig (CAP1 antibody) at dilution of 1:20000 incubated at room temperature for 1.5 hours. The membrane was stripped and reblotted with HRP-conjugated GAPDH Monoclonal antibody (HRP-60004) as loading control. This data was developed using the same antibody clone with 68207-1-PBS in a different storage buffer formulation.



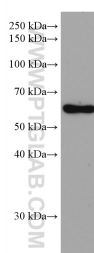
Immunofluorescent analysis of (4% PFA) fixed HepG2 cells using CAP1 antibody (68207-1-Ig, Clone: 2H3A10) at dilution of 1:800 and Coralite@488-Conjugated AffiniPure Goat Anti-Mouse IgG(H+L), CL594-Phalloidin (red). This data was developed using the same antibody clone with 68207-1-PBS in a different storage buffer formulation.



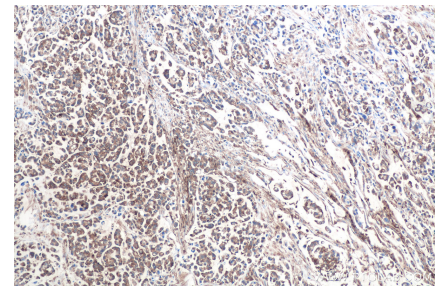
Immunofluorescent analysis of (-20°C Ethanol) fixed HepG2 cells using CAP1 antibody (68207-1-Ig, Clone: 2H3A10) at dilution of 1:800 and Coralite@488-Conjugated AffiniPure Goat Anti-Mouse IgG(H+L). This data was developed using the same antibody clone with 68207-1-PBS in a different storage buffer formulation.



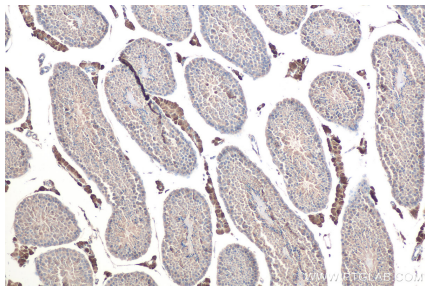
pig lung tissue were subjected to SDS PAGE followed by western blot with 68207-1-Ig (CAP1 antibody) at dilution of 1:20000 incubated at room temperature for 1.5 hours. This data was developed using the same antibody clone with 68207-1-PBS in a different storage buffer formulation.



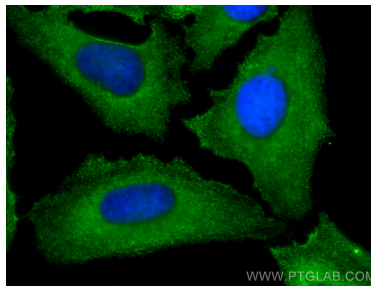
human placenta tissue were subjected to SDS PAGE followed by western blot with 68207-1-Ig (CAP1 antibody) at dilution of 1:20000 incubated at room temperature for 1.5 hours. This data was developed using the same antibody clone with 68207-1-PBS in a different storage buffer formulation.



Immunohistochemical analysis of paraffin-embedded human colon cancer tissue slide using 68207-1-Ig (CAP1 antibody) at dilution of 1:2000 (under 10x lens). Heat mediated antigen retrieval with Tris-EDTA buffer (pH 9.0). This data was developed using the same antibody clone with 68207-1-PBS in a different storage buffer formulation.



Immunohistochemical analysis of paraffin-embedded mouse testis tissue slide using 68207-1-Ig (CAP1 antibody) at dilution of 1:4000 (under 10x lens). Heat mediated antigen retrieval with Tris-EDTA buffer (pH 9.0). This data was developed using the same antibody clone with 68207-1-PBS in a different storage buffer formulation.



Immunofluorescent analysis of (-20°C Methanol) fixed HeLa cells using CAP1 antibody (68207-1-Ig, Clone: 2H3A10) at dilution of 1:400 and Coralite@488-Conjugated AffiniPure Goat Anti-Mouse IgG(H+L). This data was developed using the same antibody clone with 68207-1-PBS in a different storage buffer formulation.