

For Research Use Only

Integrin alpha 1 Monoclonal antibody, PBS Only



Catalog Number: 68211-1-PBS

Basic Information

| | | |
|---|--|---|
| Catalog Number: 68211-1-PBS | GenBank Accession Number: BC137121 | Purification Method: Protein A purification |
| Size: 1 mg/ml | GeneID (NCBI): 3672 | CloneNo.: 1C4F2 |
| Source: Mouse | UNIPROT ID: P56199 | |
| Isotype: IgG2a | Full Name: integrin, alpha 1 | |
| Immunogen Catalog Number: AG30631 | Calculated MW: 1179 aa, 131 kDa | |
| | Observed MW: 180 kDa | |

Applications

Tested Applications:
WB, Indirect ELISA

Species Specificity:
Human

Background Information

The integrins are a superfamily of cell adhesion receptors that bind to extracellular matrix ligands, cell-surface ligands, and soluble ligands (PMID: 17543136). They are transmembrane $\alpha\beta$ heterodimers and at least 24 distinct integrin heterodimers are formed by the combination of 18 α and eight β known subunits (PMID: 17543136; 20029421). In addition to mediating cell adhesion, integrins also play important roles in modulating signal transduction pathways that control cellular responses including migration, proliferation, differentiation, and apoptosis (PMID: 19118207). Integrin alpha-1 (ITGA1, CD49a) combines with the beta 1 subunit (ITGB1, CD29) to form a cell-surface receptor for collagen and laminin. This receptor is involved in cell-cell adhesion and may play a role in inflammation and fibrosis. Integrin alpha-1 is a transmembrane glycoprotein with an apparent molecular weight of 180-250 kDa, larger than the calculated molecular weight of 131 kDa (PMID: 2475259; 3257425; 11557277; 18840653).

Storage

Storage:
Store at -80°C.

Storage Buffer:
PBS Only

For technical support and original validation data for this product please contact:

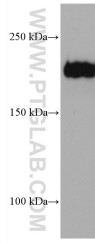
T: 4006900926

E: Proteintech-CN@ptglab.com

W: ptgcn.com

This product is exclusively available under Proteintech Group brand and is not available to purchase from any other manufacturer.

Selected Validation Data



HepG2 cells were subjected to SDS PAGE followed by western blot with 68211-1-Ig (Integrin alpha-1 antibody) at dilution of 1:10000 incubated at room temperature for 1.5 hours. This data was developed using the same antibody clone with 68211-1-PBS in a different storage buffer formulation.