

For Research Use Only

CD163 Monoclonal antibody, PBS Only (Detector)



Catalog Number: 68218-3-PBS

Basic Information

Catalog Number: 68218-3-PBS	GenBank Accession Number: BC051281	Purification Method: Protein G Magarose purification
Size: 1 mg/ml	GeneID (NCBI): 9332	CloneNo.: 3E6H10
Source: Mouse	ENSEMBL Gene ID: ENSG00000177575	
Isotype: IgG1	UNIPROT ID: Q86VB7	
Immunogen Catalog Number: AG26721	Full Name: CD163 molecule	
	Calculated MW: 1156 aa, 125 kDa	

Applications

Tested Applications:
Cytometric bead array, Indirect ELISA

Species Specificity:
human

Background Information

Storage

Storage:
Store at -80°C.
The product is shipped with ice packs. Upon receipt, store it immediately at -80°C

Storage Buffer:
PBS Only

For technical support and original validation data for this product please contact:

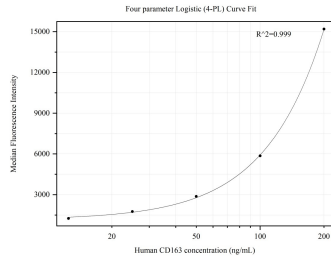
T: 4006900926

E: Proteintech-CN@ptglab.com

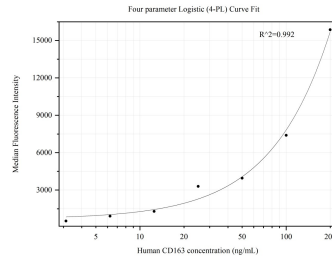
W: ptgcn.com

This product is exclusively available under Proteintech Group brand and is not available to purchase from any other manufacturer.

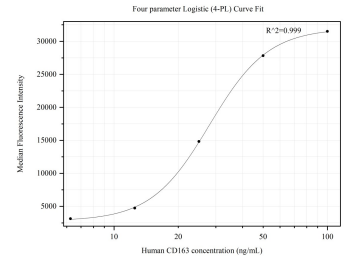
Selected Validation Data



Cytometric bead array standard curve of MP50318-1, CD163 Monoclonal Matched Antibody Pair, PBS Only. Capture antibody: 68218-2-PBS. Detection antibody: 68218-3-PBS. Standard:Ag26721. Range: 12.5-200 ng/mL



Cytometric bead array standard curve of MP50318-2, CD163 Monoclonal Matched Antibody Pair, PBS Only. Capture antibody: 68218-4-PBS. Detection antibody: 68218-3-PBS. Standard:Ag26721. Range: 3.125-200 ng/mL



Cytometric bead array standard curve of MP50318-3, CD163 Monoclonal Matched Antibody Pair, PBS Only. Capture antibody: 68218-5-PBS. Detection antibody: 68218-3-PBS. Standard:Ag26721. Range: 6.25-100 ng/mL