

For Research Use Only

# CD163 Monoclonal antibody, PBS Only (Capture/Detector)



Catalog Number: 68218-5-PBS

## Basic Information

<b>Catalog Number:</b> 68218-5-PBS	<b>GenBank Accession Number:</b> BC051281	<b>Purification Method:</b> Protein A purification
<b>Size:</b> 1 mg/ml	<b>GeneID (NCBI):</b> 9332	<b>CloneNo.:</b> 2B6A6
<b>Source:</b> Mouse	<b>ENSEMBL Gene ID:</b> ENSG00000177575	
<b>Isotype:</b> IgG1	<b>UNIPROT ID:</b> Q86VB7	
<b>Immunogen Catalog Number:</b> AG26721	<b>Full Name:</b> CD163 molecule	
	<b>Calculated MW:</b> 1156 aa, 125 kDa	

## Applications

**Tested Applications:**  
Cytometric bead array, Indirect ELISA

**Species Specificity:**  
human

## Background Information

### Storage

**Storage:**  
Store at -80°C.  
**The product is shipped with ice packs. Upon receipt, store it immediately at -80°C**

**Storage Buffer:**  
PBS Only

For technical support and original validation data for this product please contact:

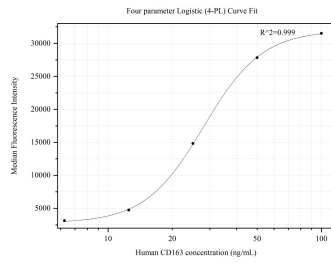
T: 4006900926

E: [Proteintech-CN@ptglab.com](mailto:Proteintech-CN@ptglab.com)

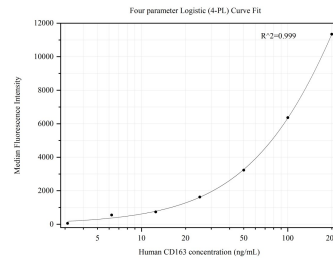
W: [ptgcn.com](http://ptgcn.com)

**This product is exclusively available under Proteintech Group brand and is not available to purchase from any other manufacturer.**

## Selected Validation Data



Cytometric bead array standard curve of MP50318-3, CD163 Monoclonal Matched Antibody Pair, PBS Only. Capture antibody: 68218-5-PBS. Detection antibody: 68218-3-PBS. Standard:Ag26721. Range: 6.25-100 ng/mL



Cytometric bead array standard curve of MP50318-4, CD163 Monoclonal Matched Antibody Pair, PBS Only. Capture antibody: 68218-4-PBS. Detection antibody: 68218-5-PBS. Standard:Ag26721. Range: 3.125-200 ng/mL