

For Research Use Only

ATP6V1B1 Monoclonal antibody

Catalog Number: 68219-1-Ig



Basic Information

Catalog Number:

68219-1-Ig

Size:

500 µg/ml

Source:

Mouse

Isotype:

IgG1

Immunogen Catalog Number:

AG7405

GenBank Accession Number:

BC063411

GeneID (NCBI):

525

UNIPROT ID:

P15313

Full Name:

ATPase, H⁺ transporting, lysosomal
56/58kDa, V1 subunit B1

Calculated MW:

57 kDa

Observed MW:

56 kDa

Purification Method:

Protein G purification

CloneNo.:

1G10A8

Recommended Dilutions:

WB 1:5000-1:50000

IF 1:400-1:1600

Applications

Tested Applications:

IF/ICC, WB, ELISA

Species Specificity:

Human, Mouse, Rat, Rabbit, Pig

Positive Controls:

WB : JAR cells, pig brain tissue, pig cerebellum tissue, rabbit brain tissue, rabbit cerebellum tissue, rat kidney tissue, rat brain tissue, mouse kidney tissue, mouse brain tissue

IF : HEK-293 cells,

Background Information

ATP6V1B1, also named ATP6B1, VATB and VPP3, belongs to the ATPase alpha/beta chains family. ATP6V1B1 is mainly expressed in kidney. ATP6V1B1 is essential for the proper assembly and activity of V-ATPase. In renal intercalated cells, ATP6V1B1 mediates secretion of protons (H⁺) into the urine thereby ensuring correct urinary acidification. The calculated molecular weight of ATP6V1B1 is 57 kDa.

Storage

Storage:

Store at -20°C. Stable for one year after shipment.

Storage Buffer:

PBS with 0.02% sodium azide and 50% glycerol pH 7.3.

Aliquoting is unnecessary for -20°C storage

For technical support and original validation data for this product please contact:

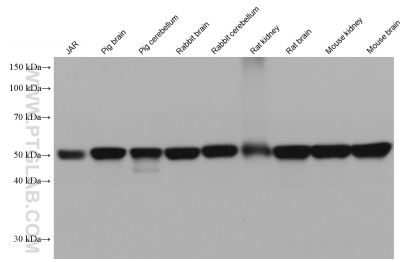
T: 4006900926

E: Proteintech-CN@ptglab.com

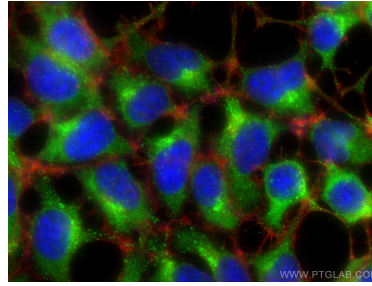
W: ptgcn.com

This product is exclusively available under Proteintech Group brand and is not available to purchase from any other manufacturer.

Selected Validation Data



Various lysates were subjected to SDS PAGE followed by western blot with 68219-1-Ig (ATP6V1B1 antibody) at dilution of 1:20000 incubated at room temperature for 1.5 hours.



Immunofluorescent analysis of (-20°C Ethanol) fixed HEK-293 cells using ATP6V1B1 antibody (68219-1-Ig, Clone: 1G10A8) at dilution of 1:800 and CoraLite®488-Conjugated AffiniPure Goat Anti-Mouse IgG(H+L), CL594-Phalloidin (red).