

For Research Use Only

RCL1 Monoclonal antibody, PBS Only



Catalog Number: 68221-1-PBS

Basic Information

Catalog Number: 68221-1-PBS	GenBank Accession Number: BC001025	Purification Method: Protein G purification
Size: 1 mg/ml	GeneID (NCBI): 10171	CloneNo.: 1D1B3
Source: Mouse	UNIPROT ID: Q9Y2P8	
Isotype: IgG1	Full Name: RNA terminal phosphate cyclase-like 1	
Immunogen Catalog Number: AG7058	Calculated MW: 41 kDa	
	Observed MW: 41 kDa	

Applications

Tested Applications:
WB, Indirect ELISA

Species Specificity:
Human, Mouse, Rat

Background Information

RNA 3'-terminal phosphate cyclase-like protein (RCL1) does not have cyclase activity. It plays a role in 40S-ribosomal-subunit biogenesis in the early pre-rRNA processing steps at sites A0, A1 and A2 that are required for proper maturation of the 18S RNA. RCL1 has two isoforms with the molecular weight of 41 kDa and 20 kDa.

Storage

Storage:
Store at -80°C.
The product is shipped with ice packs. Upon receipt, store it immediately at -80°C

Storage Buffer:
PBS Only

For technical support and original validation data for this product please contact:

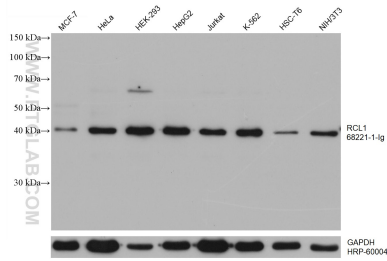
T: 4006900926

E: Proteintech-CN@ptglab.com

W: ptgcn.com

This product is exclusively available under Proteintech Group brand and is not available to purchase from any other manufacturer.

Selected Validation Data



Various lysates were subjected to SDS PAGE followed by western blot with 68221-1-Ig (RCL1 antibody) at dilution of 1:20000 and incubated at room temperature for 1.5 hours. The membrane was stripped and reblotted with HRP-conjugated GAPDH Monoclonal antibody (HRP-60004) as loading control. This data was developed using the same antibody clone with 68221-1-PBS in a different storage buffer formulation.