

For Research Use Only

calcyphosine Monoclonal antibody

Catalog Number: 68225-1-Ig



Basic Information

Catalog Number: 68225-1-Ig	GenBank Accession Number: BC080599	Purification Method: Protein G purification
Size: 1000 µg/ml	GeneID (NCBI): 828	CloneNo.: 2B7D1
Source: Mouse	UNIPROT ID: Q13938	Recommended Dilutions: WB 1:2000-1:10000 IF/ICC 1:400-1:1600
Isotype: IgG1	Full Name: calcyphosine	
Immunogen Catalog Number: AG10330	Calculated MW: 189 aa, 21 kDa	
	Observed MW: 21 kDa	

Applications

Tested Applications: WB, IF/ICC, ELISA	Positive Controls:
Species Specificity: Human, pig, rabbit	WB : SK-BR-3 cells, pig lung tissue, rabbit lung tissue, U-251 cells, PC-3 cells
	IF/ICC : U-251 cells,

Background Information

calcyphosine is a calcium-binding protein, which may play a role in the regulation of ion transport. Calcyphosine (CAPS) was initially identified in the canine thyroid but has also been detected in humans and other mammals. CAPS synthesis is increased by thyroid - stimulating hormone and cAMP analogs that promote cell proliferation and maintain cell differentiation. Recently, CAPS was found to be involved in many kinds of tumor.

Storage

Storage:
Store at -20°C. Stable for one year after shipment.
Storage Buffer:
PBS with 0.02% sodium azide and 50% glycerol pH 7.3.
Aliquoting is unnecessary for -20°C storage

For technical support and original validation data for this product please contact:

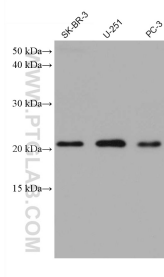
T: 4006900926

E: Proteintech-CN@ptglab.com

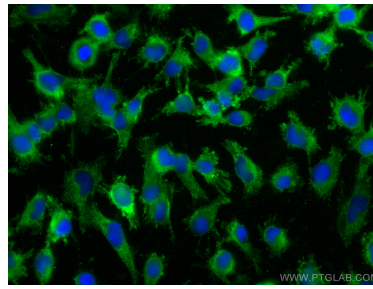
W: ptgcn.com

This product is exclusively available under Proteintech Group brand and is not available to purchase from any other manufacturer.

Selected Validation Data



Various lysates were subjected to SDS PAGE followed by western blot with 68225-1-Ig (CAPS antibody) at dilution of 1:5000 incubated at room temperature for 1.5 hours.



Immunofluorescent analysis of (-20°C Ethanol) fixed U-251 cells using calyphosine antibody (68225-1-Ig, Clone: 2B7D1) at dilution of 1:800 and CoraLite®488-Conjugated AffiniPure Goat Anti-Mouse IgG(H+L).