

For Research Use Only

# PSMA2 Monoclonal antibody, PBS Only



Catalog Number: 68240-1-PBS

## Basic Information

<b>Catalog Number:</b> 68240-1-PBS	<b>GenBank Accession Number:</b> BC047697	<b>Purification Method:</b> Protein G purification
<b>Size:</b> 1 mg/ml	<b>GeneID (NCBI):</b> 5683	<b>CloneNo.:</b> 2H4A10
<b>Source:</b> Mouse	<b>UNIPROT ID:</b> P25787	
<b>Isotype:</b> IgG1	<b>Full Name:</b> proteasome (prosome, macropain) subunit, alpha type, 2	
<b>Immunogen Catalog Number:</b> AG5837	<b>Calculated MW:</b> 26 kDa	
	<b>Observed MW:</b> 26 kDa	

## Applications

**Tested Applications:**  
WB, Indirect ELISA, IHC

**Species Specificity:**  
Human, mouse, pig, rat

## Background Information

PSMA2 (Proteasome subunit alpha type-2) is the essential subunit that contributes to the complete assembly of 20S proteasome complex, involved in the proteolytic degradation of most intracellular proteins. It is required in spermatogenesis and generation of a subset of MHC class I-presented antigenic peptides (PMID: 34711951, PMID: 27342858). Dysregulation of PSMA2 degradation leads to tumorigenesis including cervical cancer (PMID: 33684886).

## Storage

**Storage:**  
Store at -80°C.  
**The product is shipped with ice packs. Upon receipt, store it immediately at -80°C**

**Storage Buffer:**  
PBS Only

For technical support and original validation data for this product please contact:

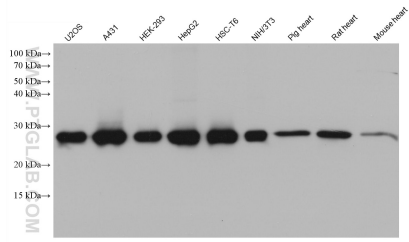
T: 4006900926

E: [Proteintech-CN@ptglab.com](mailto:Proteintech-CN@ptglab.com)

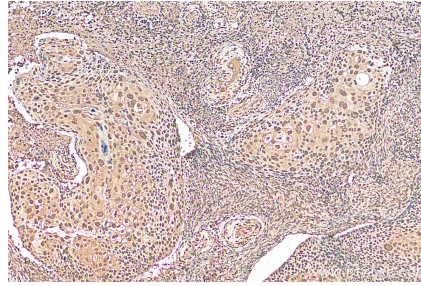
W: [ptgcn.com](http://ptgcn.com)

**This product is exclusively available under Proteintech Group brand and is not available to purchase from any other manufacturer.**

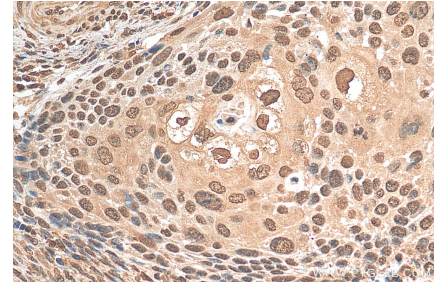
## Selected Validation Data



Various lysates were subjected to SDS PAGE followed by western blot with 68240-1-Ig (PSMA2 antibody) at dilution of 1:2000 incubated at room temperature for 1.5 hours. This data was developed using the same antibody clone with 68240-1-PBS in a different storage buffer formulation.



Immunohistochemical analysis of paraffin-embedded human cervical cancer tissue slide using 68240-1-Ig (PSMA2 antibody) at dilution of 1:200 (under 10x lens). Heat mediated antigen retrieval with Tris-EDTA buffer (pH 9.0). This data was developed using the same antibody clone with 68240-1-PBS in a different storage buffer formulation.



Immunohistochemical analysis of paraffin-embedded human cervical cancer tissue slide using 68240-1-Ig (PSMA2 antibody) at dilution of 1:200 (under 40x lens). Heat mediated antigen retrieval with Tris-EDTA buffer (pH 9.0). This data was developed using the same antibody clone with 68240-1-PBS in a different storage buffer formulation.