

For Research Use Only

GLO1 Monoclonal antibody, PBS Only



Catalog Number: 68242-1-PBS

Basic Information

Catalog Number: 68242-1-PBS	GenBank Accession Number: BC001741	Purification Method: Protein A purification
Size: 1mg/ml	GeneID (NCBI): 2739	CloneNo.: 1B7A8
Source: Mouse	UNIPROT ID: Q04760	
Isotype: IgG2a	Full Name: glyoxalase I	
Immunogen Catalog Number: AG7314	Calculated MW: 21 kDa	
	Observed MW: 21-25 kDa	

Applications

Tested Applications:
WB, IF/ICC, Indirect ELISA

Species Specificity:
human, mouse, rat

Background Information

Glo1 (glyoxalase I) is a cytosolic protein expressed in all mammalian cells. Its physiological function is the detoxification of MG (methylglyoxal), which is a potent precursor of AGEs (advanced glycation end-products). Glo1 is known to play a role in many diseases including diabetes mellitus, Alzheimer's disease, and cancer.

Storage

Storage:
Store at -80°C.
The product is shipped with ice packs. Upon receipt, store it immediately at -80°C

Storage Buffer:
PBS Only

For technical support and original validation data for this product please contact:

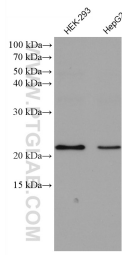
T: 4006900926

E: Proteintech-CN@ptglab.com

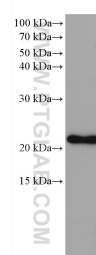
W: ptgcn.com

This product is exclusively available under Proteintech Group brand and is not available to purchase from any other manufacturer.

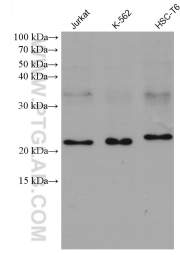
Selected Validation Data



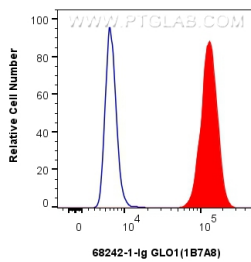
Various lysates were subjected to SDS PAGE followed by western blot with 68242-1-Ig (GLO 1 antibody) at dilution of 1:3000 incubated at room temperature for 1.5 hours. This data was developed using the same antibody clone with 68242-1-PBS in a different storage buffer formulation.



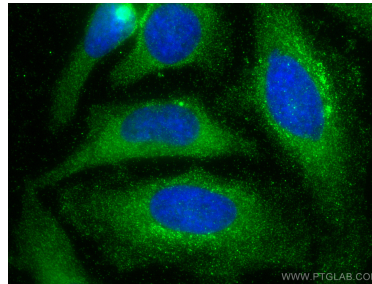
LNCaP cells were subjected to SDS PAGE followed by western blot with 68242-1-Ig (GLO 1 antibody) at dilution of 1:3000 incubated at room temperature for 1.5 hours. This data was developed using the same antibody clone with 68242-1-PBS in a different storage buffer formulation.



Various lysates were subjected to SDS PAGE followed by western blot with 68242-1-Ig (GLO 1 antibody) at dilution of 1:3000 incubated at room temperature for 1.5 hours. This data was developed using the same antibody clone with 68242-1-PBS in a different storage buffer formulation.



1x10⁶ HeLa cells were intracellularly stained with 0.4 ug GLO1 Monoclonal antibody (68242-1-Ig, Clone:1B7A8) and CoraLite488-conjugated Donkey Anti-Mouse IgG(H+L)(SA00013-5)(red), or 0.4 ug Mouse IgG2a Isotype Control (C1.18.4) (65208-1-Ig, Clone: C.1.18.4) (blue). Cells were fixed with 4% PFA and permeabilized with Flow Cytometry Perm Buffer (PF00011-C). This data was developed using the same antibody clone with 68242-1-PBS in a different storage buffer



Immunofluorescent analysis of (-20°C Methanol) fixed HeLa cells using GLO1 antibody (68242-1-Ig, Clone: 1B7A8) at dilution of 1:400 and CoraLite@488-Conjugated AffiniPure Goat Anti-Mouse IgG(H+L). This data was developed using the same antibody clone with 68242-1-PBS in a different storage buffer formulation.