

For Research Use Only

CBX2 Monoclonal antibody

Catalog Number: 68244-1-Ig



Basic Information

Catalog Number: 68244-1-Ig	GenBank Accession Number: BC004252	Purification Method: Protein G purification
Size: 1000 ug/ml	GeneID (NCBI): 84733	CloneNo.: 1D3H3
Source: Mouse	UNIPROT ID: Q14781	Recommended Dilutions: WB 1:5000-1:50000 IF/ICC 1:200-1:800
Isotype: IgG1	Full Name: chromobox homolog 2 (Pc class homolog, Drosophila)	
Immunogen Catalog Number: AG8311	Calculated MW: 56 kDa	
	Observed MW: 65-70 kDa	

Applications

Tested Applications: WB, IF/ICC, ELISA	Positive Controls:
Species Specificity: human	WB : HepG2 cells, HEK-293 cells, HeLa cells, Jurkat cells, K-562 cells IF/ICC : HEK-293 cells,

Background Information

The chromobox homolog protein 2 (CBX2) is a critical component of the PRC1 complex involved in antiviral innate immunity, neuronal, and gonadal differentiation, axial patterning during embryonic development, cell proliferation, and senescence (PMID: 32870972). CBX2 has 2 isoforms with the molecular mass of 23 and 56 kDa. Sometimes higher molecular weight around 65-70 kDa can also be observed, which may be a modified variant of CBX2.

Storage

Storage:
Store at -20°C. Stable for one year after shipment.
Storage Buffer:
PBS with 0.02% sodium azide and 50% glycerol pH 7.3.
Aliquoting is unnecessary for -20°C storage

For technical support and original validation data for this product please contact:

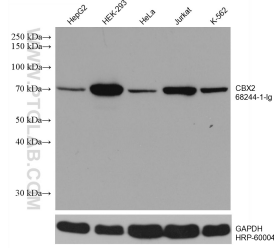
T: 4006900926

E: Proteintech-CN@ptglab.com

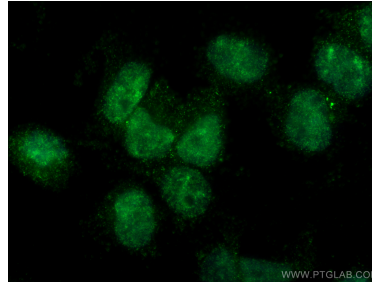
W: ptgcn.com

This product is exclusively available under Proteintech Group brand and is not available to purchase from any other manufacturer.

Selected Validation Data



Various lysates were subjected to SDS PAGE followed by western blot with 68244-1-Ig (CBX2 antibody) at dilution of 1:10000 incubated at room temperature for 1.5 hours. The membrane was stripped and reblotted with HRP-conjugated GAPDH Monoclonal antibody (HRP-60004) as loading control.



Immunofluorescent analysis of (4% PFA) fixed HEK-293 cells using CBX2 antibody (68244-1-Ig, Clone: 1D3H3) at dilution of 1:400 and CoraLite® 488-Conjugated AffiniPure Goat Anti-Mouse IgG(H+L).