

For Research Use Only

# KLK8 Monoclonal antibody, PBS Only



Catalog Number: 68247-1-PBS

## Basic Information

<b>Catalog Number:</b> 68247-1-PBS	<b>GenBank Accession Number:</b> BC040887	<b>Purification Method:</b> Protein A purification
<b>Size:</b> 1 mg/ml	<b>GeneID (NCBI):</b> 11202	<b>CloneNo.:</b> 2F3A8
<b>Source:</b> Mouse	<b>UNIPROT ID:</b> O60259	
<b>Isotype:</b> IgG2a	<b>Full Name:</b> kallikrein-related peptidase 8	
<b>Immunogen Catalog Number:</b> AG5642	<b>Calculated MW:</b> 28 kDa	
	<b>Observed MW:</b> 28 kDa	

## Applications

**Tested Applications:**  
WB, Indirect ELISA, IF

**Species Specificity:**  
Human

## Background Information

KLK8 (Kallikrein-8) is also named as NRPN, PRSS19, TADG14. It is a new member of the human kallikrein family, which is predicted to be secreted and expected to be present in biological fluids (PMID:12507964). The protein is detectable in ovarian cancer tissue extracts, serum, and ascites fluid, indicating that it may serve as a new ovarian cancer marker (PMID:12782581). KLK8 has one predicted glycosylation site (PMID:20940292) and it has some isoforms produced by alternative splicing.

## Storage

**Storage:**  
Store at -80°C.

**Storage Buffer:**  
PBS Only

For technical support and original validation data for this product please contact:

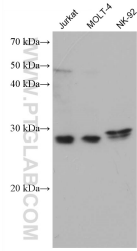
T: 4006900926

E: [Proteintech-CN@ptglab.com](mailto:Proteintech-CN@ptglab.com)

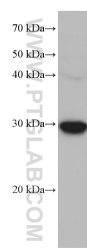
W: [ptgcn.com](http://ptgcn.com)

**This product is exclusively available under Proteintech Group brand and is not available to purchase from any other manufacturer.**

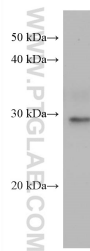
## Selected Validation Data



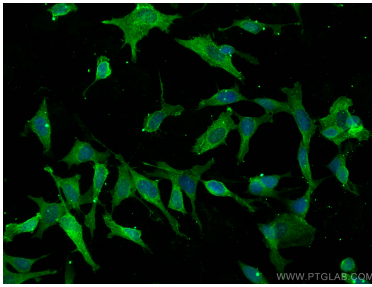
Various lysates were subjected to SDS PAGE followed by western blot with 68247-1-Ig (KLK8 antibody) at dilution of 1:10000 incubated at room temperature for 1.5 hours. This data was developed using the same antibody clone with 68247-1-PBS in a different storage buffer formulation.



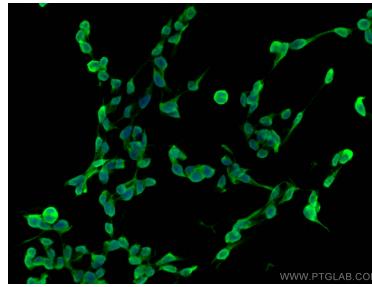
EC109 cells were subjected to SDS PAGE followed by western blot with 68247-1-Ig (KLK8 antibody) at dilution of 1:10000 incubated at room temperature for 1.5 hours. This data was developed using the same antibody clone with 68247-1-PBS in a different storage buffer formulation.



A431 cells were subjected to SDS PAGE followed by western blot with 68247-1-Ig (KLK8 antibody) at dilution of 1:10000 incubated at room temperature for 1.5 hours. This data was developed using the same antibody clone with 68247-1-PBS in a different storage buffer formulation.



Immunofluorescent analysis of (4% PFA) fixed SH-SY5Y cells using KLK8 antibody (68247-1-Ig, Clone: 2F3A8) at dilution of 1:800 and CoraLite®488-Conjugated AffiniPure Goat Anti-Mouse IgG(H+L). This data was developed using the same antibody clone with 68247-1-PBS in a different storage buffer formulation.



Immunofluorescent analysis of (4% PFA) fixed SH-SY5Y cells using KLK8 antibody (68247-1-Ig, Clone: 2F3A8) at dilution of 1:800 and CoraLite®488-Conjugated AffiniPure Goat Anti-Mouse IgG(H+L). This data was developed using the same antibody clone with 68247-1-PBS in a different storage buffer formulation.