

For Research Use Only

CNTN1 Monoclonal antibody

Catalog Number: 68252-1-Ig



Basic Information

Catalog Number: 68252-1-Ig	GenBank Accession Number: BC036569	Purification Method: Protein G purification
Size: 1000 µg/ml	GeneID (NCBI): 1272	CloneNo.: 1C1D4
Source: Mouse	UNIPROT ID: Q12860	Recommended Dilutions: WB 1:5000-1:50000
Isotype: IgG1	Full Name: contactin 1	
Immunogen Catalog Number: AG5030	Calculated MW: 1018 aa, 113 kDa	
	Observed MW: 130-135 kDa	

Applications

Tested Applications: WB, ELISA	Positive Controls: WB : A549 cells, pig cerebellum tissue, pig brain tissue, rabbit brain tissue, rabbit cerebellum tissue
Species Specificity: Human, pig, rabbit	

Background Information

Contactin-1 (CNTN1), also known as Glycoprotein gp135 or Neural cell surface protein F3, is a neuronal cell adhesion molecule of the immunoglobulin superfamily (PMID: 3049624). It consists of six Ig domains, four fibronectin-like motifs, and a glycosylphosphatidylinositol (GPI)-moiety. Expressed by the central and peripheral neurons, CNTN1 contributes to the formation and function of neuronal connections. It plays a role in axon extension and formation of septate-like junctions between axons and myelinating glial cells (PMID: 23724143). In addition, acting as a ligand for Notch, CNTN1 initiates a NOTCH/DTX1 signaling pathway that promotes oligodendrocyte maturation and myelination (PMID: 14567914).

Storage

Storage:
Store at -20°C. Stable for one year after shipment.
Storage Buffer:
PBS with 0.02% sodium azide and 50% glycerol pH 7.3.
Aliquoting is unnecessary for -20°C storage

For technical support and original validation data for this product please contact:

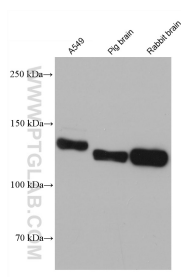
T: 4006900926

E: Proteintech-CN@ptglab.com

W: ptgcn.com

This product is exclusively available under Proteintech Group brand and is not available to purchase from any other manufacturer.

Selected Validation Data



Various lysates were subjected to SDS PAGE followed by western blot with 68252-1-Ig (CNTN1 antibody) at dilution of 1:20000 incubated at room temperature for 1.5 hours.