

For Research Use Only

CHCHD3 Monoclonal antibody

Catalog Number: 68259-1-Ig

Featured Product

1 Publications



Basic Information

Catalog Number:

68259-1-Ig

Size:

1000 µg/ml

Source:

Mouse

Isotype:

IgG2a

Immunogen Catalog Number:

AG22628

GenBank Accession Number:

BC014839

GeneID (NCBI):

54927

UNIPROT ID:

Q9NX63

Full Name:

coiled-coil-helix-coiled-coil-helix domain containing 3

Calculated MW:

227 aa, 26 kDa

Observed MW:

26 kDa

Purification Method:

Protein A purification

CloneNo.:

1C8H12

Recommended Dilutions:

WB 1:5000-1:50000

IF 1:400-1:1600

Applications

Tested Applications:

WB, IF/ICC, ELISA

Cited Applications:

WB

Species Specificity:

Human, mouse, rat, rabbit, pig

Cited Species:

rat

Positive Controls:

WB: pig heart tissue, A549 cells, HeLa cells, rabbit heart tissue, rat heart tissue, mouse heart tissue, rat brain tissue

IF: MCF-7 cells,

Background Information

CHCHD3, initially identified as a substrate for cAMP-dependent protein kinase (PKA), is a ubiquitous protein in the mitochondria and plays a prominent role in maintaining cristae integrity and mitochondrial function. In mitochondria, ChChd3 is predominantly localized to the inner membrane (IM), facing toward the intermembrane space (IMS), and is part of the large protein complex now called as MINOS (mitochondrial inner membrane organizing system), or MIB (mitochondrial intermembrane space bridging). CHCHD3 is highly conserved in mammals with human and mouse protein sharing 92% sequence similarity.

Notable Publications

Author	Pubmed ID	Journal	Application
Jian Guo	36819507	Ann Transl Med	WB

Storage

Storage:

Store at -20°C. Stable for one year after shipment.

Storage Buffer:

PBS with 0.02% sodium azide and 50% glycerol pH 7.3.

Aliquoting is unnecessary for -20°C storage

For technical support and original validation data for this product please contact:

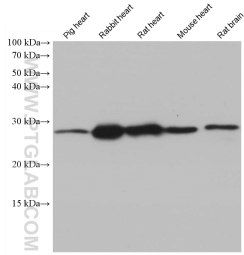
T: 4006900926

E: Proteintech-CN@ptglab.com

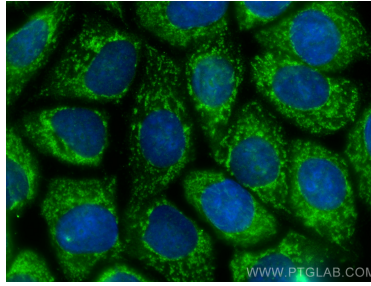
W: ptgcn.com

This product is exclusively available under Proteintech Group brand and is not available to purchase from any other manufacturer.

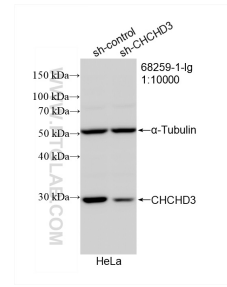
Selected Validation Data



Various lysates were subjected to SDS PAGE followed by western blot with 68259-1-Ig (CHCHD3 antibody) at dilution of 1:20000 incubated at room temperature for 1.5 hours.



Immunofluorescent analysis of (-20°C Methanol) fixed MCF-7 cells using CHCHD3 antibody (68259-1-Ig, Clone: 1C8H12) at dilution of 1:800 and CoraLite®488-Conjugated AffiniPure Goat Anti-Mouse IgG(H+L).



WB result of CHCHD3 antibody (68259-1-Ig; 1:10000; incubated at room temperature for 1.5 hours) with sh-Control and sh-CHCHD3 transfected HeLa cells.