

For Research Use Only

RPS20 Monoclonal antibody, PBS Only (Detector)

Catalog Number: 68270-1-PBS



Basic Information

| | | |
|--|--|---|
| Catalog Number: 68270-1-PBS | GenBank Accession Number: BC007507 | Purification Method: Protein G purification |
| Size: 1mg/ml | GeneID (NCBI): 6224 | CloneNo.: 3E9B4 |
| Source: Mouse | UNIPROT ID: P60866 | |
| Isotype: IgG1 | Full Name: ribosomal protein S20 | |
| Immunogen Catalog Number: AG8275 | Calculated MW: 13 kDa | |
| | Observed MW: 16 kDa | |

Applications

Tested Applications:
WB, IHC, IF/ICC, Cytometric bead array, Indirect ELISA

Species Specificity:
human, mouse, rat

Background Information

Ribosomes, the organelles that catalyze protein synthesis, consist of a small 40S subunit and a large 60S subunit. Together these subunits are composed of 4 RNA species and approximately 80 structurally distinct proteins. RPS20 is a component of the 40S subunit. The protein belongs to the S10P family of ribosomal proteins. It is located in the cytoplasm.

Storage

Storage:
Store at -80°C.
The product is shipped with ice packs. Upon receipt, store it immediately at -80°C

Storage Buffer:
PBS Only

For technical support and original validation data for this product please contact:

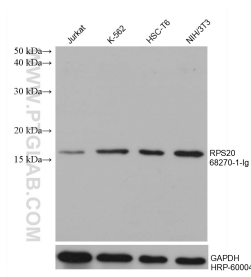
T: 4006900926

E: Proteintech-CN@ptglab.com

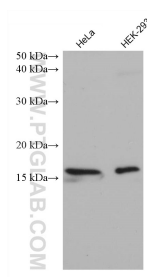
W: ptgcn.com

This product is exclusively available under Proteintech Group brand and is not available to purchase from any other manufacturer.

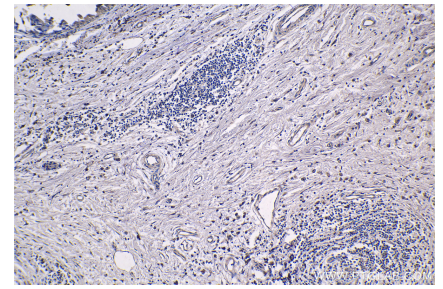
Selected Validation Data



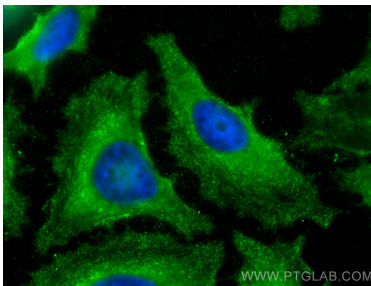
Various lysates were subjected to SDS PAGE followed by western blot with 68270-1-Ig (RPS20 antibody) at dilution of 1:10000 incubated at room temperature for 1.5 hours. The membrane was stripped and reblotted with HRP-conjugated GAPDH Monoclonal antibody (HRP-60004) as loading control. This data was developed using the same antibody clone with 68270-1-PBS in a different storage buffer formulation.



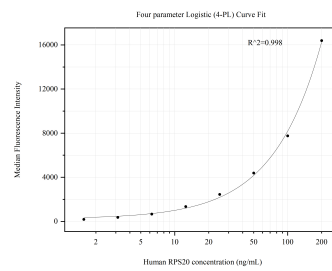
Various lysates were subjected to SDS PAGE followed by western blot with 68270-1-Ig (RPS20 antibody) at dilution of 1:10000 incubated at room temperature for 1.5 hours. This data was developed using the same antibody clone with 68270-1-PBS in a different storage buffer formulation.



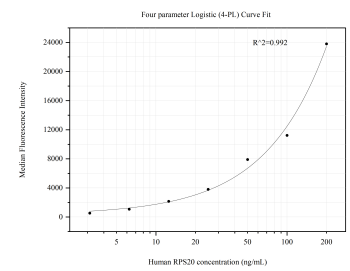
Immunohistochemical analysis of paraffin-embedded human breast cancer tissue slide using 68270-1-Ig (RPS20 antibody) at dilution of 1:1000 (under 10x lens). This data was developed using the same antibody clone with 68270-1-PBS in a different storage buffer formulation.



Immunofluorescent analysis of (-20°C Methanol) fixed HeLa cells using RPS20 antibody (68270-1-Ig, Clone: 3E9B4) at dilution of 1:1500 and CoraLite®488-Conjugated AffiniPure Goat Anti-Mouse IgG(H+L). This data was developed using the same antibody clone with 68270-1-PBS in a different storage buffer formulation.



Cytometric bead array standard curve of MP50774-1, RPS20 Monoclonal Matched Antibody Pair, PBS Only. Capture antibody: 68270-2-PBS. Detection antibody: 68270-1-PBS. Standard: Ag8275. Range: 1.563-200 ng/mL.



Cytometric bead array standard curve of MP50774-2, RPS20 Monoclonal Matched Antibody Pair, PBS Only. Capture antibody: 68270-3-PBS. Detection antibody: 68270-1-PBS. Standard: Ag8275. Range: 3.125-200 ng/mL.