

For Research Use Only

CRTAC1 Monoclonal antibody, PBS Only



Catalog Number: 68276-1-PBS

Basic Information

Catalog Number: 68276-1-PBS	GenBank Accession Number: BC034245	Purification Method: Protein A purification
Size: 1mg/ml	GeneID (NCBI): 55118	CloneNo.: 2A11E2
Source: Mouse	UNIPROT ID: Q9NQ79	
Isotype: IgG2b	Full Name: cartilage acidic protein 1	
Immunogen Catalog Number: AG32813	Calculated MW: 661 aa, 71 kDa	
	Observed MW: 71 kDa	

Applications

Tested Applications:
WB, IF, Indirect ELISA

Species Specificity:
Human, rat, mouse, rabbit, pig

Background Information

CRTAC1 (cartilage acidic protein 1) is also named as ASPIC1 and CEP68. CRTAC1 is an extracellular matrix protein of human chondrogenic tissue. CRTAC1 promotes cell proliferation, migration and extracellular matrix regeneration and remodeling in primary human fibroblasts (PMID:32084494). CRTAC1 expression is decreased in tissue samples of bladder urothelial carcinoma (PMID:34818994). CRTAC1 overexpression promotes the pyroptosis of human lens epithelial cells by facilitating the reactive oxygen species (ROS) production in the formation of cataract (PMID:32838966). CRTAC1 was the most compelling and robust biomarker for osteoarthritis severity and progression (PMID:35924962).

Storage

Storage:
Store at -80°C.
The product is shipped with ice packs. Upon receipt, store it immediately at -80°C

Storage Buffer:
PBS Only

For technical support and original validation data for this product please contact:

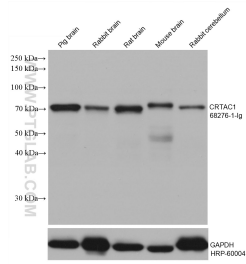
T: 4006900926

E: Proteintech-CN@ptglab.com

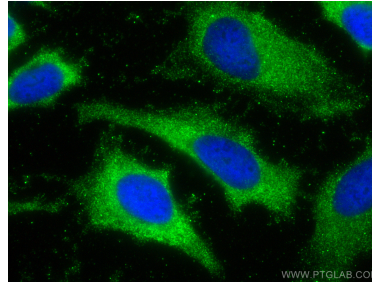
W: ptgcn.com

This product is exclusively available under Proteintech Group brand and is not available to purchase from any other manufacturer.

Selected Validation Data



Various lysates were subjected to SDS PAGE followed by western blot with 68276-1-Ig (CRTAC1 antibody) at dilution of 1:2000 incubated at room temperature for 1.5 hours. The membrane was stripped and reblotted with HRP-conjugated GAPDH Monoclonal antibody (HRP-60004) as loading control. This data was developed using the same antibody clone with 68276-1-PBS in a different storage buffer formulation.



Immunofluorescent analysis of (-20°C Ethanol) fixed HeLa cells using CRTAC1 antibody (68276-1-Ig, Clone: 2A11E2) at dilution of 1:800 and CoraLite®488-Conjugated AffiniPure Goat Anti-Mouse IgG(H+L). This data was developed using the same antibody clone with 68276-1-PBS in a different storage buffer formulation.