

For Research Use Only

# PDXDC1 Monoclonal antibody, PBS Only



Catalog Number: 68278-1-PBS

## Basic Information

<b>Catalog Number:</b> 68278-1-PBS	<b>GenBank Accession Number:</b> BC033748	<b>Purification Method:</b> Protein A purification
<b>Size:</b> 1 mg/ml	<b>GeneID (NCBI):</b> 23042	<b>CloneNo.:</b> 1E6E2
<b>Source:</b> Mouse	<b>UNIPROT ID:</b> Q6P996	
<b>Isotype:</b> IgG1	<b>Full Name:</b> pyridoxal-dependent decarboxylase domain containing 1	
<b>Immunogen Catalog Number:</b> AG15489	<b>Calculated MW:</b> 788 aa, 87 kDa	
	<b>Observed MW:</b> 87 kDa	

## Applications

**Tested Applications:**  
WB,IF,ELISA

**Species Specificity:**  
Human, mouse, rat, pig

## Background Information

PDXDC1 (pyridoxal-dependent decarboxylase domain containing 1) is a putative enzyme that could metabolize catecholamine neurotransmitters (PMID:28485732). With prior evidence for involvement with glioblastoma from other previously reported experimental settings, and contains the lead single nucleotide polymorphism (rs3198697) from the linkage analysis of the chromosome 16 region (PMID:32644145). Moreover, PDXDC1 is involved in the catalysis of the nonhydrolytic addition or removal of a carboxyl group to or from a compound (PMID:29277971).

## Storage

**Storage:**  
Store at -20°C. Stable for one year after shipment.

**Storage Buffer:**  
PBS only

Aliquoting is unnecessary for -20°C storage

For technical support and original validation data for this product please contact:

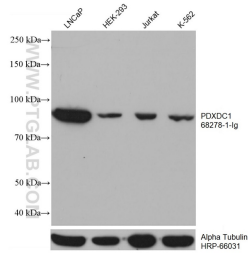
T: 4006900926

E: [Proteintech-CN@ptglab.com](mailto:Proteintech-CN@ptglab.com)

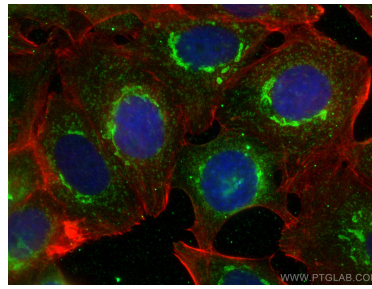
W: [ptgcn.com](http://ptgcn.com)

This product is exclusively available under Proteintech Group brand and is not available to purchase from any other manufacturer.

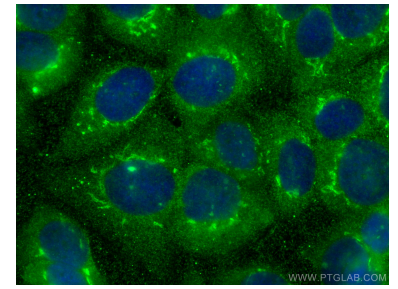
## Selected Validation Data



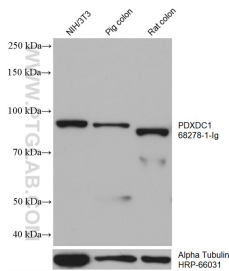
Various lysates were subjected to SDS PAGE followed by western blot with 68278-1-Ig (PD $\times$ DC1 antibody) at dilution of 1:20000 incubated at room temperature for 1.5 hours. The membrane was stripped and reblotted with HRP-conjugated Alpha Tubulin Monoclonal antibody (HRP-66031) as loading control. This data was developed using the same antibody clone with 68278-1-PBS in a different storage buffer formulation.



Immunofluorescent analysis of (4% PFA) fixed MCF-7 cells using PD $\times$ DC1 antibody (68278-1-Ig, Clone: 1E6E2 ) at dilution of 1:800 and CoraLite@488-Conjugated AffiniPure Goat Anti-Mouse IgG(H+L), CL594-Phalloidin (red). This data was developed using the same antibody clone with 68278-1-PBS in a different storage buffer formulation.



Immunofluorescent analysis of (-20°C Methanol) fixed MCF-7 cells using PD $\times$ DC1 antibody (68278-1-Ig, Clone: 1E6E2 ) at dilution of 1:800 and CoraLite@488-Conjugated AffiniPure Goat Anti-Mouse IgG(H+L). This data was developed using the same antibody clone with 68278-1-PBS in a different storage buffer formulation.



NIH/3T3 cells were subjected to SDS PAGE followed by western blot with 68278-1-Ig (PD $\times$ DC1 antibody) at dilution of 1:20000 incubated at room temperature for 1.5 hours. The membrane was stripped and reblotted with HRP-conjugated Alpha Tubulin Monoclonal antibody (HRP-66031) as loading control. This data was developed using the same antibody clone with 68278-1-PBS in a different storage buffer formulation.