

For Research Use Only

# MATR3 Monoclonal antibody, PBS Only



Catalog Number: 68280-1-PBS

## Basic Information

<b>Catalog Number:</b> 68280-1-PBS	<b>GenBank Accession Number:</b> BC015031	<b>Purification Method:</b> Protein A purification
<b>Size:</b> 1 mg/ml	<b>GeneID (NCBI):</b> 9782	<b>CloneNo.:</b> 3B12C7
<b>Source:</b> Mouse	<b>UNIPROT ID:</b> P43243	
<b>Isotype:</b> IgG2b	<b>Full Name:</b> matrin 3	
<b>Immunogen Catalog Number:</b> AG31502	<b>Calculated MW:</b> 847 aa, 95 kDa	
	<b>Observed MW:</b> 120 kDa	

## Applications

**Tested Applications:**  
WB, Indirect ELISA

**Species Specificity:**  
Human, mouse, rat

## Background Information

MATR3, known as KIAA0723, is an 847 amino acid protein, which may play a role in transcription or may interact with other nuclear matrix proteins to form the internal fibrogranular network. MATR3 was originally identified as a nuclear matrix protein containing both DNA and RNA binding domains (PMID: 2033075) with a wide variety of functions ranging from DNA damage response to transcriptional and post-transcriptional regulation of cellular and viral RNAs (PMID: 21771346). The calculated molecular weight of MATR3 is 94 kDa, but we detect a 125 kDa protein as a result of PMID: 28977530.

## Storage

**Storage:**  
Store at -80°C.  
**The product is shipped with ice packs. Upon receipt, store it immediately at -80°C**

**Storage Buffer:**  
PBS Only

For technical support and original validation data for this product please contact:

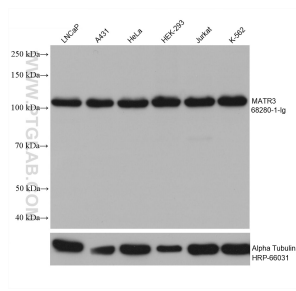
T: 4006900926

E: [Proteintech-CN@ptglab.com](mailto:Proteintech-CN@ptglab.com)

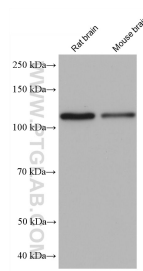
W: [ptgcn.com](http://ptgcn.com)

**This product is exclusively available under Proteintech Group brand and is not available to purchase from any other manufacturer.**

## Selected Validation Data



Various lysates were subjected to SDS PAGE followed by western blot with 68280-1-Ig (MATR3 antibody) at dilution of 1:10000 incubated at room temperature for 1.5 hours. The membrane was stripped and reblotted with HRP-conjugated Alpha Tubulin Monoclonal antibody (HRP-66031) as loading control. This data was developed using the same antibody clone with 68280-1-PBS in a different storage buffer formulation.



Various lysates were subjected to SDS PAGE followed by western blot with 68280-1-Ig (MATR3 antibody) at dilution of 1:10000 incubated at room temperature for 1.5 hours. This data was developed using the same antibody clone with 68280-1-PBS in a different storage buffer formulation.