

For Research Use Only

C6orf211/ARMT1 Monoclonal antibody, PBS Only



Catalog Number: 68288-1-PBS

Featured Product

Basic Information

Catalog Number:

68288-1-PBS

Size:

1 mg/ml

Source:

Mouse

Isotype:

IgG1

Immunogen Catalog Number:

AG19146

GenBank Accession Number:

BC011348

GeneID (NCBI):

79624

UNIPROT ID:

Q9H993

Full Name:

chromosome 6 open reading frame

211

Calculated MW:

441 aa, 51 kDa

Observed MW:

45-51 kDa

Purification Method:

Protein G purification

CloneNo.:

1D6D9

Applications

Tested Applications:

WB, Indirect ELISA

Species Specificity:

Human

Background Information

Human C6orf211 encodes Armt1, a protein carboxyl methyltransferase that targets PCNA and is linked to the DNA damage response.

Storage

Storage:

Store at -80°C.

The product is shipped with ice packs. Upon receipt, store it immediately at -80°C

Storage Buffer:

PBS Only

For technical support and original validation data for this product please contact:

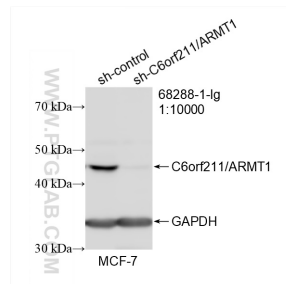
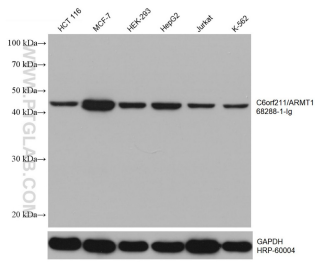
T: 4006900926

E: Proteintech-CN@ptglab.com

W: ptgcn.com

This product is exclusively available under Proteintech Group brand and is not available to purchase from any other manufacturer.

Selected Validation Data



Various lysates were subjected to SDS PAGE followed by western blot with 68288-1-Ig (C6orf211 antibody) at dilution of 1:10000 incubated at room temperature for 1.5 hours. The membrane was stripped and reblotted with HRP-conjugated GAPDH Monoclonal antibody (HRP-60004) as loading control. This data was developed using the same antibody clone with 68288-1-PBS in a different storage buffer formulation.

WB result of C6orf211/ARMT1 antibody (68288-1-Ig; 1:10000; incubated at room temperature for 1.5 hours) with sh-Control and sh-C6orf211/ARMT1 transfected MCF-7 cells. This data was developed using the same antibody clone with 68288-1-PBS in a different storage buffer formulation.