

For Research Use Only

GTSE1 Monoclonal antibody, PBS Only



Catalog Number: 68313-1-PBS

Basic Information

Catalog Number: 68313-1-PBS	GenBank Accession Number: BC006325	Purification Method: Protein G purification
Size: 1 mg/ml	GeneID (NCBI): 51512	CloneNo.: 3B4A12
Source: Mouse	UNIPROT ID: Q9NYZ3	
Isotype: IgG1	Full Name: G-2 and S-phase expressed 1	
Immunogen Catalog Number: AG32817	Calculated MW: 77 kDa	
	Observed MW: 67 kDa	

Applications

Tested Applications:
WB, Indirect ELISA

Species Specificity:
Human, Rat, mouse

Background Information

GTSE1 is only expressed in the S and G2 phases of the cell cycle, where it colocalizes with cytoplasmic tubulin and microtubules. In response to DNA damage, the encoded protein accumulates in the nucleus and binds the tumor suppressor protein p53, shutting it out of the nucleus and repressing its ability to induce apoptosis.

Storage

Storage:
Store at -80°C.
The product is shipped with ice packs. Upon receipt, store it immediately at -80°C

Storage Buffer:
PBS Only

For technical support and original validation data for this product please contact:

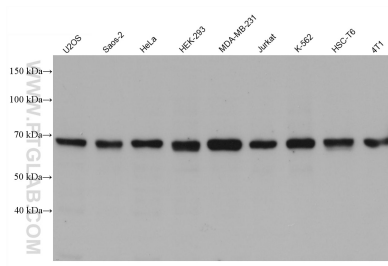
T: 4006900926

E: Proteintech-CN@ptglab.com

W: ptgcn.com

This product is exclusively available under Proteintech Group brand and is not available to purchase from any other manufacturer.

Selected Validation Data



Various lysates were subjected to SDS PAGE followed by western blot with 68313-1-Ig (GTSE1 antibody) at dilution of 1:10000 incubated at room temperature for 1.5 hours. This data was developed using the same antibody clone with 68313-1-PBS in a different storage buffer formulation.