

For Research Use Only

PBLD Monoclonal antibody, PBS Only



Catalog Number: 68317-1-PBS

Basic Information

Catalog Number: 68317-1-PBS	GenBank Accession Number: BC009738	Purification Method: Protein G purification
Size: 1mg/ml	GeneID (NCBI): 64081	CloneNo.: 1G11D4
Source: Mouse	UNIPROT ID: P30039	
Isotype: IgG1	Full Name: phenazine biosynthesis-like protein domain containing	
Immunogen Catalog Number: AG23827	Observed MW: 30 kDa	

Applications

Tested Applications:
WB, IF, Indirect ELISA

Species Specificity:
Human, pig

Background Information

PBLD, also termed as MAWBP, was first identified from a human liver cDNA library using a yeast two-hybrid technique by Iriyama et al. As the only representative of phenazine biosynthesis-like protein family, PBLD is widely expressed in human tissues, such as brain, heart, lung, liver, pancreas, kidney, and placenta. Its expression is elevated in several diseases processes, including insulin resistance, folate deficiency, and hypotension. PBLD has been proved to be involved in gastric carcinogenesis, PBLD expression was attenuated in gastric cancer (GC) tissues, and negatively regulated the growth and invasion in gastric cancer cell-lines by inhibiting TGF- β 1-induced EMT (Epithelial-Mesenchymal Transition). (PMID: 11355021, 17929853, 23687415, 26594798)

Storage

Storage:
Store at -80°C.
The product is shipped with ice packs. Upon receipt, store it immediately at -80°C

Storage Buffer:
PBS Only

For technical support and original validation data for this product please contact:

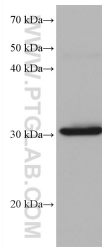
T: 4006900926

E: Proteintech-CN@ptglab.com

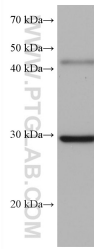
W: ptgcn.com

This product is exclusively available under Proteintech Group brand and is not available to purchase from any other manufacturer.

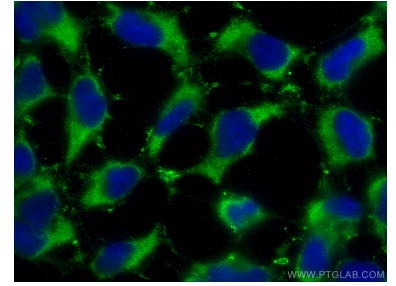
Selected Validation Data



pig liver tissue were subjected to SDS PAGE followed by western blot with 68317-1-Ig (PBLD antibody) at dilution of 1:5000 incubated at room temperature for 1.5 hours. This data was developed using the same antibody clone with 68317-1-PBS in a different storage buffer formulation.



pig kidney tissue were subjected to SDS PAGE followed by western blot with 68317-1-Ig (PBLD antibody) at dilution of 1:5000 incubated at room temperature for 1.5 hours. This data was developed using the same antibody clone with 68317-1-PBS in a different storage buffer formulation.



Immunofluorescent analysis of (-20°C Ethanol) fixed HEK-293 cells using PBLD antibody (68317-1-Ig, Clone: 1G11D4) at dilution of 1:400 and CoraLite®488-Conjugated AffiniPure Goat Anti-Mouse IgG(H+L). This data was developed using the same antibody clone with 68317-1-PBS in a different storage buffer formulation.