

For Research Use Only

MTHFD1L Monoclonal antibody, PBS Only



Catalog Number: 68321-1-PBS

Basic Information

Catalog Number: 68321-1-PBS	GenBank Accession Number: BC017477	Purification Method: Protein A purification
Size: 1mg/ml	GeneID (NCBI): 25902	CloneNo.: 1G1F2
Source: Mouse	UNIPROT ID: Q6UB35	
Isotype: IgG2b	Full Name: methylenetetrahydrofolate dehydrogenase (NADP+ dependent) 1- like	
Immunogen Catalog Number: AG9061	Calculated MW: 978 aa, 106 kDa	
	Observed MW: 106 kDa	

Applications

Tested Applications:
WB, IHC, Indirect ELISA

Species Specificity:
Human, Rat, Rabbit, Mouse

Background Information

MTHFD1L (Monofunctional C1-tetrahydrofolate synthase, mitochondrial) is also named as FTHFSDC1 (Formyltetrahydrofolate synthetase). MTHFD1L enzyme is present in mitochondria from normal embryonic tissues and embryonic fibroblast cell lines, and embryonic mitochondria possess the ability to synthesize formate from glycine. It catalyzes the final step in the mitochondrial conversion of 1-C units to formate in embryos. Moreover, MTHFD1L levels were substantially higher in embryonic mitochondria than in adult liver mitochondria and embryonic mitochondria exhibited greater formate production (PMID:19948730). It has 2 isoforms produced by alternative splicing.

Storage

Storage:
Store at -80°C.

Storage Buffer:
PBS Only

For technical support and original validation data for this product please contact:

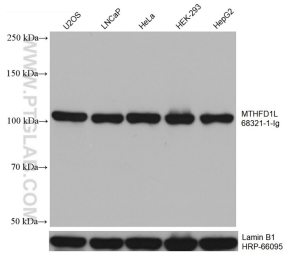
T: 4006900926

E: Proteintech-CN@ptglab.com

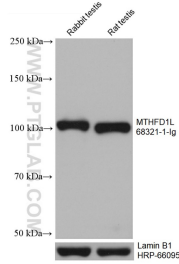
W: ptgcn.com

This product is exclusively available under Proteintech Group brand and is not available to purchase from any other manufacturer.

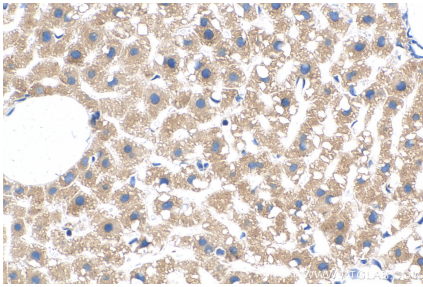
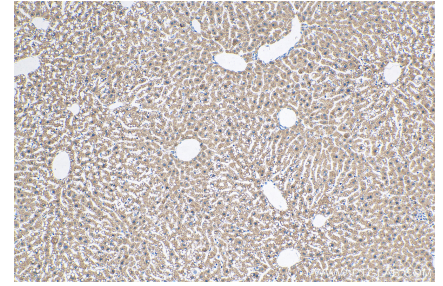
Selected Validation Data



Various lysates were subjected to SDS PAGE followed by western blot with 68321-1-Ig (MTHFD1L antibody) at dilution of 1:10000 incubated at room temperature for 1.5 hours. The membrane was stripped and reblotted with HRP-conjugated Lamin B1 Monoclonal antibody (HRP-66095) as loading control. This data was developed using the same antibody clone with 68321-1-PBS in a different storage buffer formulation.



Various lysates were subjected to SDS PAGE followed by western blot with 68321-1-Ig (MTHFD1L antibody) at dilution of 1:10000 incubated at room temperature for 1.5 hours. The membrane was stripped and reblotted with HRP-conjugated Lamin B1 Monoclonal antibody (HRP-66095) as loading control. This data was developed using the same antibody clone with 68321-1-PBS in a different storage buffer formulation.



Immunohistochemical analysis of paraffin-embedded mouse liver tissue slide using 68321-1-Ig (MTHFD1L antibody) at dilution of 1:500 (under 40x lens). Heat mediated antigen retrieval with Tris-EDTA buffer (pH 9.0). This data was developed using the same antibody clone with 68321-1-PBS in a different storage buffer formulation.