

For Research Use Only

# NAB2 Monoclonal antibody, PBS Only



Catalog Number: 68322-1-PBS

## Basic Information

Catalog Number:

68322-1-PBS

Size:

1 mg/ml

Source:

Mouse

Isotype:

IgG2b

Immunogen Catalog Number:

AG6346

GenBank Accession Number:

BC065931

GeneID (NCBI):

4665

UNIPROT ID:

Q15742

Full Name:

NGFI-A binding protein 2 (EGR1 binding protein 2)

Calculated MW:

57 kDa

Observed MW:

57 kDa

Purification Method:

Protein A purification

CloneNo.:

1F1E2

## Applications

Tested Applications:

WB, Indirect ELISA

Species Specificity:

Human, Mouse, Rat

## Background Information

NGFI-A-Binding protein 2 (NAB2) is a member of the poly(A)-binding protein (PABP) family in *S. cerevisiae* and emerged as a key component in the tightly intertwined system of poly(A) tail length control, mRNP formation, and export of mature mRNPs.

## Storage

Storage:

Store at -80°C.

The product is shipped with ice packs. Upon receipt, store it immediately at -80°C

Storage Buffer:

PBS Only

For technical support and original validation data for this product please contact:

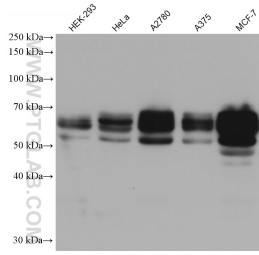
T: 4006900926

E: [Proteintech-CN@ptglab.com](mailto:Proteintech-CN@ptglab.com)

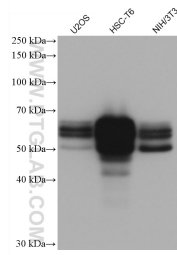
W: [ptgcn.com](http://ptgcn.com)

This product is exclusively available under Proteintech Group brand and is not available to purchase from any other manufacturer.

## Selected Validation Data



Various lysates were subjected to SDS PAGE followed by western blot with 68322-1-Ig (NAB2 antibody) at dilution of 1:20000 incubated at room temperature for 1.5 hours. This data was developed using the same antibody clone with 68322-1-PBS in a different storage buffer formulation.



Various lysates were subjected to SDS PAGE followed by western blot with 68322-1-Ig (NAB2 antibody) at dilution of 1:20000 incubated at room temperature for 1.5 hours. This data was developed using the same antibody clone with 68322-1-PBS in a different storage buffer formulation.