

For Research Use Only

NDUFS6 Monoclonal antibody

Catalog Number: 68329-1-Ig



Basic Information

Catalog Number: 68329-1-Ig	GenBank Accession Number: BC046155	Purification Method: Protein G purification
Size: 1000 µg/ml	GeneID (NCBI): 4726	CloneNo.: 2F4H3
Source: Mouse	UNIPROT ID: O75380	Recommended Dilutions: WB 1:5000-1:50000 IHC 1:500-1:2000 IF/ICC 1:400-1:1600
Isotype: IgG1	Full Name: NADH dehydrogenase (ubiquinone) Fe-S protein 6, 13kDa (NADH- coenzyme Q reductase)	
Immunogen Catalog Number: AG6286	Calculated MW: 14 kDa	
	Observed MW: 13-15 kDa	

Applications

Tested Applications: IF/ICC, IHC, WB, ELISA	Positive Controls:
Species Specificity: Human, Mouse, Rat, Rabbit, Chicken	WB : rabbit heart tissue, HepG2 cells, rat heart tissue, mouse heart tissue, chicken heart tissue
Note-IHC: suggested antigen retrieval with TE buffer pH 9.0; (*) Alternatively, antigen retrieval may be performed with citrate buffer pH 6.0	IHC : human prostate cancer tissue, IF/ICC : HepG2 cells,

Background Information

NDUFS6(NADH dehydrogenase [ubiquinone] iron-sulfur protein 6, mitochondrial) is also named as CI-13kD-A, NADH-ubiquinone oxidoreductase 13 kDa-A subunit and belongs to the complex I NDUFS6 subunit family. It is an accessory subunit of the mitochondrial membrane respiratory chain NADH dehydrogenase (Complex I), that is believed not to be involved in catalysis.

Storage

Storage:
Store at -20°C. Stable for one year after shipment.
Storage Buffer:
PBS with 0.02% sodium azide and 50% glycerol pH 7.3.
Aliquoting is unnecessary for -20°C storage

For technical support and original validation data for this product please contact:

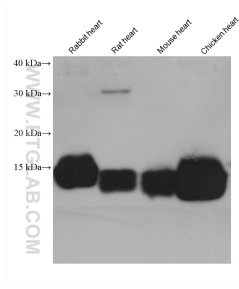
T: 4006900926

E: Proteintech-CN@ptglab.com

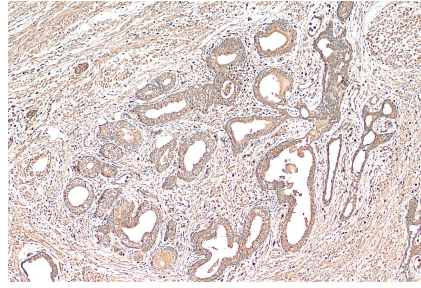
W: ptgcn.com

This product is exclusively available under Proteintech Group brand and is not available to purchase from any other manufacturer.

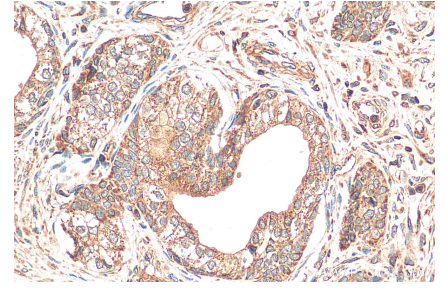
Selected Validation Data



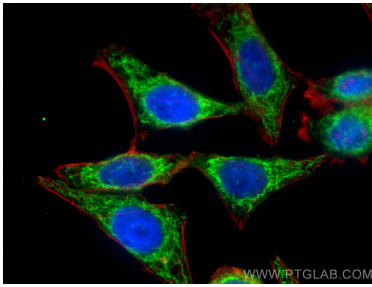
rabbit heart tissue were subjected to SDS PAGE followed by western blot with 68329-1-Ig (NDUFS6 antibody) at dilution of 1:20000 incubated at room temperature for 1.5 hours.



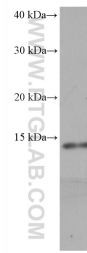
Immunohistochemical analysis of paraffin-embedded human prostate cancer tissue slide using 68329-1-Ig (NDUFS6 antibody) at dilution of 1:1000 (under 10x lens). Heat mediated antigen retrieval with Tris-EDTA buffer (pH 9.0).



Immunohistochemical analysis of paraffin-embedded human prostate cancer tissue slide using 68329-1-Ig (NDUFS6 antibody) at dilution of 1:1000 (under 40x lens). Heat mediated antigen retrieval with Tris-EDTA buffer (pH 9.0).



Immunofluorescent analysis of (4% PFA) fixed HepG2 cells using NDUFS6 antibody (68329-1-Ig, Clone: 2F4H3) at dilution of 1:800 and CoraLite®488-Conjugated AffiniPure Goat Anti-Mouse IgG(H+L), CL594-phalloidin (red).



HepG2 cells were subjected to SDS PAGE followed by western blot with 68329-1-Ig (NDUFS6 antibody) at dilution of 1:20000 incubated at room temperature for 1.5 hours.