

For Research Use Only

NDUFS6 Monoclonal antibody, PBS Only



Catalog Number: 68329-1-PBS

Basic Information

Catalog Number: 68329-1-PBS	GenBank Accession Number: BC046155	Purification Method: Protein G purification
Size: 1 mg/ml	GeneID (NCBI): 4726	CloneNo.: 2F4H3
Source: Mouse	UNIPROT ID: O75380	
Isotype: IgG1	Full Name: NADH dehydrogenase (ubiquinone) Fe-S protein 6, 13kDa (NADH- coenzyme Q reductase)	
Immunogen Catalog Number: AG6286	Calculated MW: 14 kDa	
	Observed MW: 13-15 kDa	

Applications

Tested Applications:
WB, Indirect ELISA, IHC, IF

Species Specificity:
Human, Mouse, Rat, Rabbit, Chicken

Background Information

NDUFS6 (NADH dehydrogenase [ubiquinone] iron-sulfur protein 6, mitochondrial) is also named as CI-13kD-A, NADH-ubiquinone oxidoreductase 13 kDa-A subunit and belongs to the complex I NDUFS6 subunit family. It is an accessory subunit of the mitochondrial membrane respiratory chain NADH dehydrogenase (Complex I), that is believed not to be involved in catalysis.

Storage

Storage:
Store at -80°C.
The product is shipped with ice packs. Upon receipt, store it immediately at -80°C

Storage Buffer:
PBS Only

For technical support and original validation data for this product please contact:

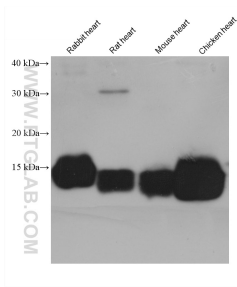
T: 4006900926

E: Proteintech-CN@ptglab.com

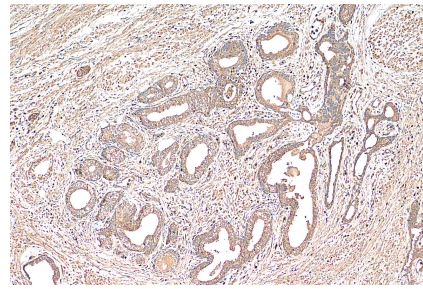
W: ptgcn.com

This product is exclusively available under Proteintech Group brand and is not available to purchase from any other manufacturer.

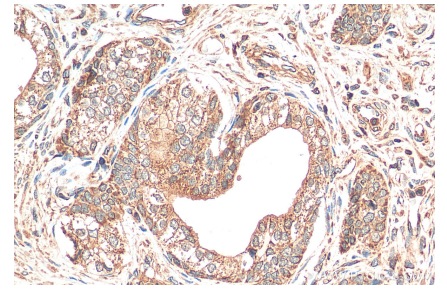
Selected Validation Data



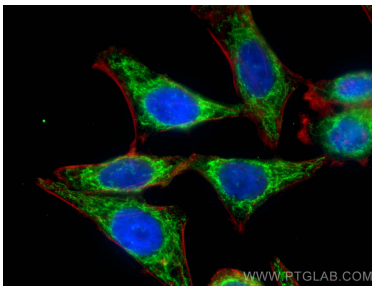
rabbit heart tissue were subjected to SDS PAGE followed by western blot with 68329-1-Ig (NDUFS6 antibody) at dilution of 1:20000 incubated at room temperature for 1.5 hours. This data was developed using the same antibody clone with 68329-1-PBS in a different storage buffer formulation.



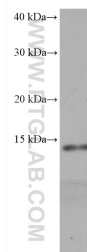
Immunohistochemical analysis of paraffin-embedded human prostate cancer tissue slide using 68329-1-Ig (NDUFS6 antibody) at dilution of 1:1000 (under 10x lens). Heat mediated antigen retrieval with Tris-EDTA buffer (pH 9.0). This data was developed using the same antibody clone with 68329-1-PBS in a different storage buffer formulation.



Immunohistochemical analysis of paraffin-embedded human prostate cancer tissue slide using 68329-1-Ig (NDUFS6 antibody) at dilution of 1:1000 (under 40x lens). Heat mediated antigen retrieval with Tris-EDTA buffer (pH 9.0). This data was developed using the same antibody clone with 68329-1-PBS in a different storage buffer formulation.



Immunofluorescent analysis of (4% PFA) fixed HepG2 cells using NDUFS6 antibody (68329-1-Ig, Clone: 2F4H3) at dilution of 1:800 and CoraLite®488-Conjugated AffiniPure Goat Anti-Mouse IgG(H+L), CL594-phalloidin (red). This data was developed using the same antibody clone with 68329-1-PBS in a different storage buffer formulation.



HepG2 cells were subjected to SDS PAGE followed by western blot with 68329-1-Ig (NDUFS6 antibody) at dilution of 1:20000 incubated at room temperature for 1.5 hours. This data was developed using the same antibody clone with 68329-1-PBS in a different storage buffer formulation.