

For Research Use Only

# ALAS2 Monoclonal antibody, PBS Only (Capture/Detector)

Catalog Number: 68332-2-PBS



## Basic Information

|   |  |   |
|---|--|---|
| <b>Catalog Number:</b><br>68332-2-PBS       | <b>GenBank Accession Number:</b><br>BC030230             | <b>Purification Method:</b><br>Protein G purification |
| <b>Size:</b><br>1 mg/ml                     | <b>GeneID (NCBI):</b><br>212                             | <b>CloneNo.:</b><br>2B3C12                            |
| <b>Source:</b><br>Mouse                     | <b>UNIPROT ID:</b><br>P22557                             |   |
| <b>Isotype:</b><br>IgG1                     | <b>Full Name:</b><br>aminolevulinate, delta-, synthase 2 |   |
| <b>Immunogen Catalog Number:</b><br>AG13524 | <b>Calculated MW:</b><br>587 aa, 65 kDa                  |   |

## Applications

**Tested Applications:**  
Cytometric bead array, Indirect ELISA

**Species Specificity:**  
human

## Background Information

### Storage

**Storage:**  
Store at -80°C.  
**The product is shipped with ice packs. Upon receipt, store it immediately at -80°C**

**Storage Buffer:**  
PBS Only

For technical support and original validation data for this product please contact:

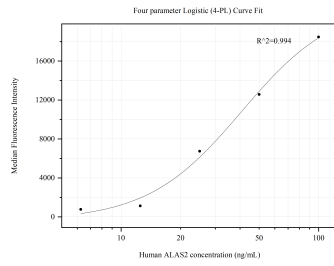
T: 4006900926

E: [Proteintech-CN@ptglab.com](mailto:Proteintech-CN@ptglab.com)

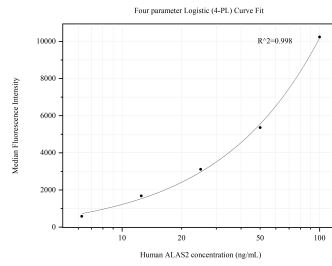
W: [ptgcn.com](http://ptgcn.com)

**This product is exclusively available under Proteintech Group brand and is not available to purchase from any other manufacturer.**

## Selected Validation Data



Cytometric bead array standard curve of MP50624-1, ALAS2 Monoclonal Matched Antibody Pair, PBS Only. Capture antibody: 68332-1-PBS. Detection antibody: 68332-2-PBS. Standard: Ag13524. Range: 6.25-100 ng/mL



Cytometric bead array standard curve of MP50624-3, ALAS2 Monoclonal Matched Antibody Pair, PBS Only. Capture antibody: 68332-2-PBS. Detection antibody: 68332-3-PBS. Standard: Ag13524. Range: 6.25-100 ng/mL