

For Research Use Only

ALAS2 Monoclonal antibody, PBS Only (Detector)

Catalog Number: 68332-5-PBS



Basic Information

Catalog Number: 68332-5-PBS	GenBank Accession Number: BC030230	Purification Method: Protein G Magarose purification
Size: 1 mg/ml	GeneID (NCBI): 212	CloneNo.: 1E5E11
Source: Mouse	UNIPROT ID: P22557	
Isotype: IgG1	Full Name: aminolevulinate, delta-, synthase 2	
Immunogen Catalog Number: AG13524	Calculated MW: 587 aa, 65 kDa	

Applications

Tested Applications:
Cytometric bead array, Indirect ELISA

Species Specificity:
human

Background Information

Storage

Storage:
Store at -80°C.
The product is shipped with ice packs. Upon receipt, store it immediately at -80°C

Storage Buffer:
PBS Only

For technical support and original validation data for this product please contact:

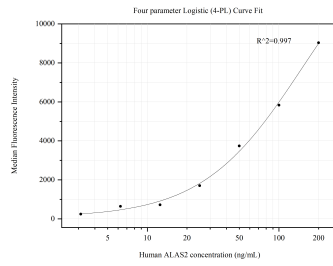
T: 4006900926

E: Proteintech-CN@ptglab.com

W: ptgcn.com

This product is exclusively available under Proteintech Group brand and is not available to purchase from any other manufacturer.

Selected Validation Data



Cytometric bead array standard curve of MP50624-4, ALAS2 Monoclonal Matched Antibody Pair, PBS Only. Capture antibody: 68332-4-PBS. Detection antibody: 68332-5-PBS. Standard: Ag13524. Range: 3.125-200 ng/mL.