

For Research Use Only

RABL3 Monoclonal antibody, PBS Only



Catalog Number: 68342-1-PBS

Basic Information

Catalog Number: 68342-1-PBS	GenBank Accession Number: BC020832	Purification Method: Protein G purification
Size: 1 mg/ml	GeneID (NCBI): 285282	CloneNo.: 2H3E1
Source: Mouse	UNIPROT ID: Q5HYI8	
Isotype: IgG1	Full Name: RAB, member of RAS oncogene family-like 3	
Immunogen Catalog Number: AG33137	Calculated MW: 236 aa, 26 kDa	
	Observed MW: 26 kDa	

Applications

Tested Applications:
WB, Indirect ELISA, IF

Species Specificity:
human

Background Information

The gene of Rbl3 is located on 3q13.3 and is composed of eight exons and seven introns. It is a member of the Rab subfamily, the largest group in the Ras superfamily of small guanosine triphosphatases (GTPases).

Storage

Storage:
Store at -80°C.
The product is shipped with ice packs. Upon receipt, store it immediately at -80°C

Storage Buffer:
PBS Only

For technical support and original validation data for this product please contact:

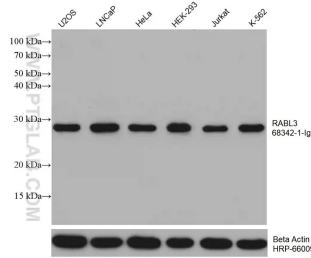
T: 4006900926

E: Proteintech-CN@ptglab.com

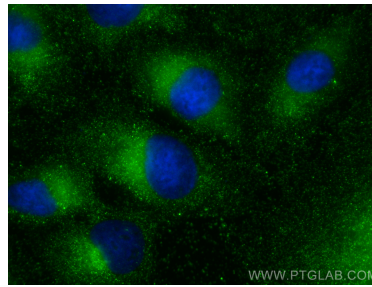
W: ptgcn.com

This product is exclusively available under Proteintech Group brand and is not available to purchase from any other manufacturer.

Selected Validation Data



Various lysates were subjected to SDS PAGE followed by western blot with 68342-1-Ig (RABL3 antibody) at dilution of 1:10000 incubated at room temperature for 1.5 hours. The membrane was stripped and reblotted with HRP-conjugated Beta Actin Monoclonal antibody (HRP-66009) as loading control. This data was developed using the same antibody clone with 68342-1-PBS in a different storage buffer formulation.



Immunofluorescent analysis of (-20°C Methanol) fixed A549 cells using RABL3 antibody (68342-1-Ig, Clone: 2H3E1) at dilution of 1:800 and CoraLite®488-Conjugated AffiniPure Goat Anti-Mouse IgG(H+L). This data was developed using the same antibody clone with 68342-1-PBS in a different storage buffer formulation.