

For Research Use Only

# MID2 Monoclonal antibody, PBS Only



Catalog Number: 68359-1-PBS

## Basic Information

Catalog Number: 68359-1-PBS	GenBank Accession Number: BC017707	Purification Method: Protein G purification
Size: 1 mg/ml	GeneID (NCBI): 11043	CloneNo.: 1F9E4
Source: Mouse	UNIPROT ID: Q9UJV3	
Isotype: IgG1	Full Name: midline 2	
Immunogen Catalog Number: AG30793	Calculated MW: 715 aa, 81 kDa	
	Observed MW: 80-83 kDa	

## Applications

Tested Applications:  
WB, Indirect ELISA

Species Specificity:  
Human

## Background Information

Midline2 (MID2) is an ubiquitin-conjugating E2 enzyme that is involved in tumor development and has a physical interaction with breast cancer 1, early-onset (BRCA1).

## Storage

Storage:  
Store at -80°C.  
**The product is shipped with ice packs. Upon receipt, store it immediately at -80°C**

Storage Buffer:  
PBS Only

For technical support and original validation data for this product please contact:

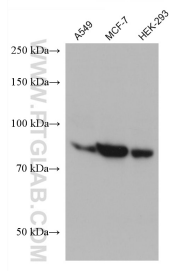
T: 4006900926

E: [Proteintech-CN@ptglab.com](mailto:Proteintech-CN@ptglab.com)

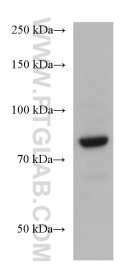
W: [ptgcn.com](http://ptgcn.com)

**This product is exclusively available under Proteintech Group brand and is not available to purchase from any other manufacturer.**

## Selected Validation Data



Various lysates were subjected to SDS PAGE followed by western blot with 68359-1-Ig (MID2 antibody) at dilution of 1:2000 incubated at room temperature for 1.5 hours. This data was developed using the same antibody clone with 68359-1-PBS in a different storage buffer formulation.



Jurkat cells were subjected to SDS PAGE followed by western blot with 68359-1-Ig (MID2 antibody) at dilution of 1:2000 incubated at room temperature for 1.5 hours. This data was developed using the same antibody clone with 68359-1-PBS in a different storage buffer formulation.