

For Research Use Only

# CCDC50 Monoclonal antibody, PBS Only



Catalog Number: 68369-1-PBS

## Basic Information

<b>Catalog Number:</b> 68369-1-PBS	<b>GenBank Accession Number:</b> BC065004	<b>Purification Method:</b> Protein G purification
<b>Size:</b> 1mg/ml	<b>GeneID (NCBI):</b> 152137	<b>CloneNo.:</b> 2F12G7
<b>Source:</b> Mouse	<b>UNIPROT ID:</b> Q8IVM0	
<b>Isotype:</b> IgG1	<b>Full Name:</b> coiled-coil domain containing 50	
<b>Immunogen Catalog Number:</b> AG15889	<b>Calculated MW:</b> 482 aa, 56 kDa	
	<b>Observed MW:</b> 36-38 kDa	

## Applications

**Tested Applications:**  
Indirect ELISA, WB

**Species Specificity:**  
human

## Background Information

CCDC50 encodes Ymer, an effector of epidermal growth factor (EGF)-mediated cell signaling that is ubiquitously expressed in different organs and has been suggested to inhibit down-regulation of the EGF receptor. CCDC50 act as a multifunctional regulator in NF- $\kappa$ B and Fas signaling pathways. In chronic lymphocytic leukaemia (CLL) and mantle cell lymphoma (MCL), CCDC50 is required for the survival of MCL and CLL cancer cells. Recently, CCDC50 was shown to promote hepatocellular carcinoma through the Ras/Foxo4 signaling pathway. (PMID: 34453126, PMID: 32612200, PMID: 17503326)

## Storage

**Storage:**  
Store at -80°C.  
**The product is shipped with ice packs. Upon receipt, store it immediately at -80°C**

**Storage Buffer:**  
PBS Only

For technical support and original validation data for this product please contact:

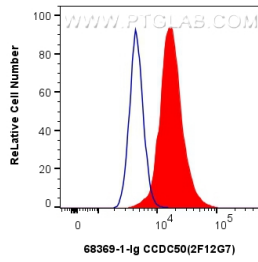
T: 4006900926

E: [Proteintech-CN@ptglab.com](mailto:Proteintech-CN@ptglab.com)

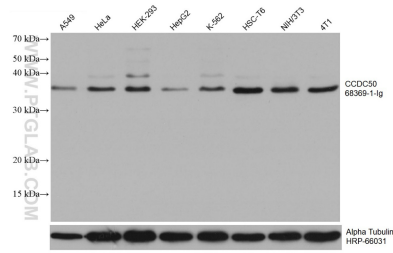
W: [ptgcn.com](http://ptgcn.com)

**This product is exclusively available under Proteintech Group brand and is not available to purchase from any other manufacturer.**

## Selected Validation Data



1x10<sup>6</sup> A549 cells were intracellularly stained with 0.4 ug CCDC50 Monoclonal antibody (68369-1-Ig, Clone:2F12G7) and CoraLite®488-Conjugated AffiniPure Goat Anti-Mouse IgG(H+L) (SA00013-1)(red), or 0.4 ug Mouse IgG1 isotype control Mouse McAb (66360-1-Ig, Clone: 1F8D3) (blue). Cells were fixed with 4% PFA and permeabilized with Flow Cytometry Perm Buffer (PF00011-C). This data was developed using the same antibody clone with 68369-1-PBS in a



Various lysates were subjected to SDS PAGE followed by western blot with 68369-1-Ig (CCDC50 antibody) at dilution of 1:50000 incubated at room temperature for 1.5 hours. The membrane was stripped and reblotted with HRP-conjugated Alpha Tubulin Monoclonal antibody (HRP-66031) as loading control. This data was developed using the same antibody clone with 68369-1-PBS in a