

For Research Use Only

TBCC Monoclonal antibody

Catalog Number: 68371-1-Ig



Basic Information

Catalog Number: 68371-1-Ig	GenBank Accession Number: BC020170	Purification Method: Protein G purification
Size: 1000 ug/ml	GeneID (NCBI): 6903	CloneNo.: 2B7D9
Source: Mouse	UNIPROT ID: Q15814	Recommended Dilutions: WB 1:5000-1:50000 IF/ICC 1:400-1:1600
Isotype: IgG1	Full Name: tubulin folding cofactor C	
Immunogen Catalog Number: AG8962	Calculated MW: 346 aa, 39 kDa	
	Observed MW: 39 kDa	

Applications

Tested Applications: WB, IF/ICC, ELISA	Positive Controls:
Species Specificity: human, mouse, rat	WB : HT-1376 cells, Calu-3 cells, HeLa cells, MDA-MB-231 cells, MDA-MB-468 cells, HepG2 cells, HSC-T6 cells, 4T1 cells, NIH/3T3 cells
	IF/ICC : HeLa cells,

Background Information

TBCC, also named CFC. Expressed in the retina. Expressed in the rod and cone photoreceptors, extending from the inner segments (IS), through the outer nuclear layer (ONL) and into the synapses in the outer plexiform layer (OPL). Strongly expressed to the photoreceptor connecting cilium at the tips of the IS (at protein level). Cofactor C was cytoplasmic in distribution (PMID: 12417528).

Storage

Storage:
Store at -20°C. Stable for one year after shipment.
Storage Buffer:
PBS with 0.02% sodium azide and 50% glycerol pH 7.3.
Aliquoting is unnecessary for -20°C storage

For technical support and original validation data for this product please contact:

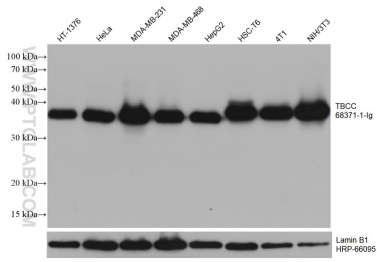
T: 4006900926

E: Proteintech-CN@ptglab.com

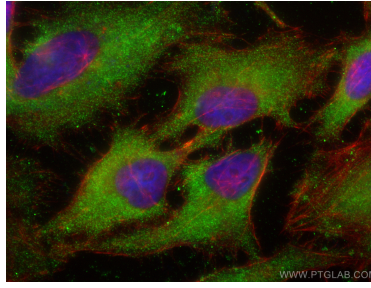
W: ptgcn.com

This product is exclusively available under Proteintech Group brand and is not available to purchase from any other manufacturer.

Selected Validation Data



Various lysates were subjected to SDS PAGE followed by western blot with 68371-1-Ig (TBCC antibody) at dilution of 1:10000 incubated at room temperature for 1.5 hours. The membrane was stripped and reblotted with HRP-conjugated Lamin B1 Monoclonal antibody (HRP-66095) as loading control.



Immunofluorescent analysis of (-20°C Ethanol) fixed HeLa cells using TBCC antibody (68371-1-Ig, Clone: 2B7D9) at dilution of 1:800 and CoraLite®488-Conjugated AffiniPure Goat Anti-Mouse IgG(H+L) (SA00013-1), CL594-Phalloidin (red).