

For Research Use Only

TSC2 Monoclonal antibody, PBS Only

Catalog Number: 68380-1-PBS



Basic Information

Catalog Number: 68380-1-PBS	GenBank Accession Number: BC150300	Purification Method: Protein A purification
Size: 1mg/ml	GeneID (NCBI): 7249	CloneNo.: 1A10B2
Source: Mouse	UNIPROT ID: P49815	
Isotype: IgG1	Full Name: tuberous sclerosis 2	
	Calculated MW: 1807 aa, 201 kDa	
	Observed MW: 200 kDa	

Applications

Tested Applications:
WB, IF, ELISA

Species Specificity:
Human, Mouse

Background Information

TSC2, also named Tuberin, plays an essential role in the cellular energy response pathway. TSC2 forms a physical and functional complex with TSC1 that can inhibit the nutrient-mediated or growth factor-stimulated phosphorylation of S6K1 and EIF4EBP1 by negatively regulating mTORC1 signaling.

Storage

Storage:
Store at -80°C.

Storage Buffer:
PBS Only

For technical support and original validation data for this product please contact:

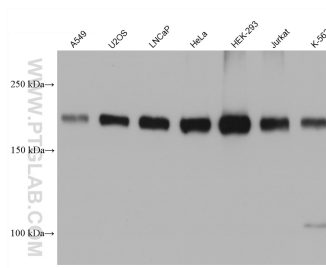
T: 4006900926

E: Proteintech-CN@ptglab.com

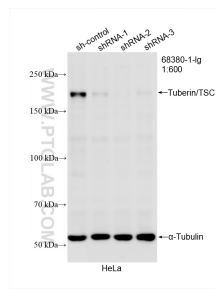
W: ptgcn.com

This product is exclusively available under Proteintech Group brand and is not available to purchase from any other manufacturer.

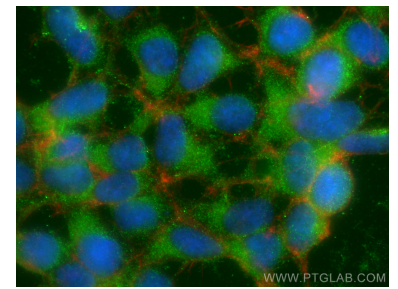
Selected Validation Data



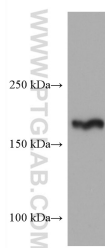
Various lysates were subjected to SDS PAGE followed by western blot with 68380-1-Ig (TSC2 antibody) at dilution of 1:5000 incubated at room temperature for 1.5 hours. This data was developed using the same antibody clone with 68380-1-PBS in a different storage buffer formulation.



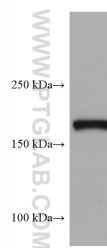
WB result of Tuberin/TSC2 antibody (68380-1-Ig; 1:600; incubated at room temperature for 1.5 hours) with sh-Control and sh-Tuberin/TSC2 transfected HeLa cells. This data was developed using the same antibody clone with 68380-1-PBS in a different storage buffer formulation.



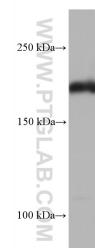
Immunofluorescent analysis of (-20°C Ethanol) fixed HEK-293 cells using TSC2 antibody (68380-1-Ig, Clone: 1A10B2) at dilution of 1:800 and CoraLite®488-Conjugated AffiniPure Goat Anti-Mouse IgG(H+L), CL594-Phalloidin (red). This data was developed using the same antibody clone with 68380-1-PBS in a different storage buffer formulation.



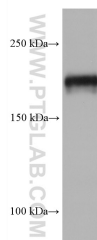
MCF-7 cells were subjected to SDS PAGE followed by western blot with 68380-1-Ig (TSC2 antibody) at dilution of 1:5000 incubated at room temperature for 1.5 hours. This data was developed using the same antibody clone with 68380-1-PBS in a different storage buffer formulation.



PC-3 cells were subjected to SDS PAGE followed by western blot with 68380-1-Ig (TSC2 antibody) at dilution of 1:5000 incubated at room temperature for 1.5 hours. This data was developed using the same antibody clone with 68380-1-PBS in a different storage buffer formulation.



NIH/3T3 cells were subjected to SDS PAGE followed by western blot with 68380-1-Ig (TSC2 antibody) at dilution of 1:5000 incubated at room temperature for 1.5 hours. This data was developed using the same antibody clone with 68380-1-PBS in a different storage buffer formulation.



HSC-T6 cells were subjected to SDS PAGE followed by western blot with 68380-1-Ig (TSC2 antibody) at dilution of 1:5000 incubated at room temperature for 1.5 hours. This data was developed using the same antibody clone with 68380-1-PBS in a different storage buffer formulation.