

For Research Use Only

# ERGIC3 Monoclonal antibody, PBS Only



Catalog Number: 68398-1-PBS

## Basic Information

<b>Catalog Number:</b> 68398-1-PBS	<b>GenBank Accession Number:</b> BC009765	<b>Purification Method:</b> Protein G purification
<b>Size:</b> 1 mg/ml	<b>GeneID (NCBI):</b> 51614	<b>CloneNo.:</b> 1B9F11
<b>Source:</b> Mouse	<b>UNIPROT ID:</b> Q9Y282	
<b>Isotype:</b> IgG1	<b>Full Name:</b> ERGIC and golgi 3	
<b>Immunogen Catalog Number:</b> AG9190	<b>Calculated MW:</b> 383 aa, 43 kDa	
	<b>Observed MW:</b> 50 kDa	

## Applications

**Tested Applications:**  
WB, Indirect ELISA

**Species Specificity:**  
Human, mouse, rat

## Background Information

ERGIC3 (Endoplasmic reticulum-Golgi intermediate compartment protein 3) is located in the cis face of the Golgi apparatus and vesicular tubular structures between the transitional endoplasmic reticulum (ER) and cis-Golgi. ERGIC3 significantly affects cell growth and causes ER stress-induced cell death, and is involved in the invasion and metastasis in hepatocellular carcinomas (HCC). (PMID: 26177443, PMID: 31142615)

## Storage

**Storage:**  
Store at -80°C.  
**The product is shipped with ice packs. Upon receipt, store it immediately at -80°C**

**Storage Buffer:**  
PBS Only

For technical support and original validation data for this product please contact:

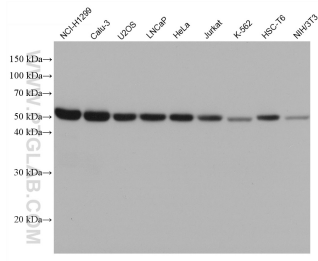
T: 4006900926

E: [Proteintech-CN@ptglab.com](mailto:Proteintech-CN@ptglab.com)

W: [ptgcn.com](http://ptgcn.com)

**This product is exclusively available under Proteintech Group brand and is not available to purchase from any other manufacturer.**

## Selected Validation Data



Various lysates were subjected to SDS PAGE followed by western blot with 68398-1-Ig (ERGIC3 antibody) at dilution of 1:10000 incubated at room temperature for 1.5 hours. This data was developed using the same antibody clone with 68398-1-PBS in a different storage buffer formulation.