

For Research Use Only

# IGFBP3 Monoclonal antibody, PBS Only



Catalog Number: 68402-1-PBS

## Basic Information

<b>Catalog Number:</b> 68402-1-PBS	<b>GenBank Accession Number:</b> BC000013	<b>Purification Method:</b> Thiophilic affinity chromatograph
<b>Size:</b> 1 mg/ml	<b>GeneID (NCBI):</b> 3486	<b>CloneNo.:</b> 1A12A11
<b>Source:</b> Mouse	<b>UNIPROT ID:</b> P17936	
<b>Isotype:</b> IgM	<b>Full Name:</b> insulin-like growth factor binding protein 3	
<b>Immunogen Catalog Number:</b> AG20351	<b>Calculated MW:</b> 32 kDa	
	<b>Observed MW:</b> 39-45 kDa	

## Applications

**Tested Applications:**  
WB, Indirect ELISA, IHC

**Species Specificity:**  
Human

## Background Information

Insulin-like growth factor binding protein-3 (IGFBP-3) contains a 27 amino acid putative signal sequence followed by a mature protein of 264 amino acids with 18 cysteine residues clustered near the N- and C-terminus. Accordingly, expression of the cloned IGFBP-3 cDNA in mammalian tissue culture cells results in secretion of the protein into the culture medium. IGFBP-3 shares high homology (33% amino acid identity) including conservation of all 18 cysteine residues with a smaller human IGF-binding protein (BP-28) identified in amniotic fluid. IGFBP-3 has one or more glycosylation sites with a protein core of 30 kDa. Western blots revealed that the 39-45 kDa IGFBP-3 fragment is a glycoprotein. (PMID: 23403918, PMID: 24926947, PMID: 19887447)

## Storage

**Storage:**  
Store at -80°C.

**Storage Buffer:**  
PBS Only

For technical support and original validation data for this product please contact:

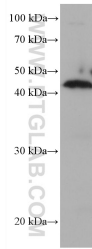
T: 4006900926

E: [Proteintech-CN@ptglab.com](mailto:Proteintech-CN@ptglab.com)

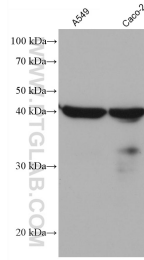
W: [ptgcn.com](http://ptgcn.com)

**This product is exclusively available under Proteintech Group brand and is not available to purchase from any other manufacturer.**

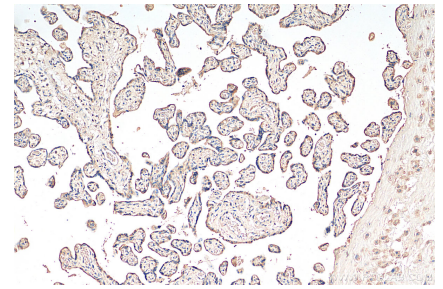
## Selected Validation Data



human placenta tissue were subjected to SDS PAGE followed by western blot with 68402-1-Ig (IGFBP3 antibody) at dilution of 1:5000 incubated at room temperature for 1.5 hours. This data was developed using the same antibody clone with 68402-1-PBS in a different storage buffer formulation.



Various lysates were subjected to SDS PAGE followed by western blot with 68402-1-Ig (IGFBP3 antibody) at dilution of 1:5000 incubated at room temperature for 1.5 hours. This data was developed using the same antibody clone with 68402-1-PBS in a different storage buffer formulation.



Immunohistochemical analysis of paraffin-embedded human placenta tissue slide using 68402-1-Ig (IGFBP3 antibody) at dilution of 1:500 (under 10x lens). Heat mediated antigen retrieval with Tris-EDTA buffer (pH 9.0). This data was developed using the same antibody clone with 68402-1-PBS in a different storage buffer formulation.