

For Research Use Only

# NPHP5/IQCB1 Monoclonal antibody

Catalog Number: 68404-1-Ig



## Basic Information

Catalog Number:

68404-1-Ig

Size:

1000 µg/ml

Source:

Mouse

Isotype:

IgG2a

Immunogen Catalog Number:

AG8203

GenBank Accession Number:

BC005806

GeneID (NCBI):

9657

UNIPROT ID:

Q15051

Full Name:

IQ motif containing B1

Calculated MW:

598 aa, 69 kDa

Observed MW:

69 kDa

Purification Method:

Protein A purification

CloneNo.:

2A9F4

Recommended Dilutions:

WB 1:2000-1:10000

## Applications

Tested Applications:

WB, ELISA

Species Specificity:

Human

Positive Controls:

WB : HaCaT cells, A431 cells, HT-1376 cells, Saos-2 cells, MDA-MB-468 cells, HEK-293 cells, COLO 320 cells, HL-60 cells, Daudi cells

## Background Information

IQCB1, also known as NPHP5, is a nephrocystin protein that interacts with calmodulin and the retinitis pigmentosa GTPase regulator protein. It has a central coiled-coil region and two calmodulin-binding IQ domains. Localized to the primary cilia of renal epithelial cells and connecting cilia of photoreceptor cells, IQCB1 is thought to play a role in ciliary function. Mutations in this gene result in Senior-Loken syndrome type 5, a juvenile disorder characterized by defects in the waste filtering system of the kidney, as well as retinal degradation.

## Storage

Storage:

Store at -20°C. Stable for one year after shipment.

Storage Buffer:

PBS with 0.02% sodium azide and 50% glycerol pH 7.3.

Aliquoting is unnecessary for -20°C storage

For technical support and original validation data for this product please contact:

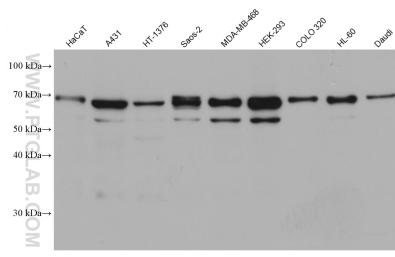
T: 4006900926

E: [Proteintech-CN@ptglab.com](mailto:Proteintech-CN@ptglab.com)

W: [ptgcn.com](http://ptgcn.com)

**This product is exclusively available under Proteintech Group brand and is not available to purchase from any other manufacturer.**

## Selected Validation Data



Various lysates were subjected to SDS PAGE followed by western blot with 68404-1-Ig (NPHP5,IQCB1 antibody) at dilution of 1:5000 incubated at room temperature for 1.5 hours.