

For Research Use Only

SYAP1 Monoclonal antibody

Catalog Number: 68410-1-Ig



Basic Information

Catalog Number:

68410-1-Ig

Size:

1000 µg/ml

Source:

Mouse

Isotype:

IgG2b

Immunogen Catalog Number:

AG9626

GenBank Accession Number:

BC014657

GeneID (NCBI):

94056

UNIPROT ID:

Q96A49

Full Name:

synapse associated protein 1, SAP47 homolog (Drosophila)

Calculated MW:

352 aa, 40 kDa

Observed MW:

50-55 kDa

Purification Method:

Protein A purification

CloneNo.:

2E12A5

Recommended Dilutions:

WB 1:5000-1:50000

IP 0.5-4.0 µg for 1.0-3.0 mg of total protein lysate

IF 1:400-1:1600

Applications

Tested Applications:

IF/ICC, IP, WB, ELISA

Species Specificity:

Human, mouse, rat

Positive Controls:

WB: U2OS cells, A549 cells, LNCaP cells, HeLa cells, Jurkat cells, K-562 cells, HSC-T6 cells, NIH/3T3 cells

IP: L02 cells,

IF: HepG2 cells,

Background Information

SYAP1 (Synapse-associated protein 1) is a human homologue of the Drosophila SAP47 (synapse associated protein), which is recognized by a monoclonal antibody that selectively stain synaptic terminals. This protein is a 352 amino acid protein that is ubiquitously expressed in adult tissues. SYAP1 contains one BSD domain which is an approximately 60 amino acid long protein domain named after the BTF2-like transcription factors, Synapse-associated proteins and DOS2-like proteins in which it is found.

Storage

Storage:

Store at -20°C. Stable for one year after shipment.

Storage Buffer:

PBS with 0.02% sodium azide and 50% glycerol pH 7.3.

Aliquoting is unnecessary for -20°C storage

For technical support and original validation data for this product please contact:

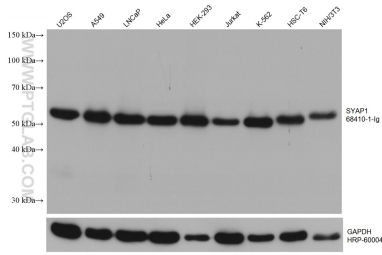
T: 4006900926

E: Proteintech-CN@ptglab.com

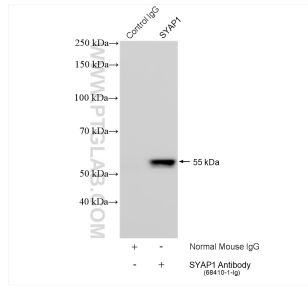
W: ptgcn.com

This product is exclusively available under Proteintech Group brand and is not available to purchase from any other manufacturer.

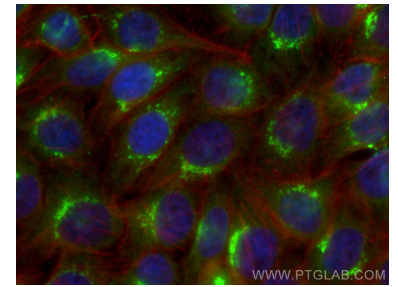
Selected Validation Data



Various lysates were subjected to SDS PAGE followed by western blot with 68410-1-Ig (SYAP1 antibody) at dilution of 1:10000 incubated at room temperature for 1.5 hours. The membrane was stripped and reblotted with HRP-conjugated GAPDH Monoclonal antibody (HRP-60004) as loading control.



IP result of anti-SYAP1 (IP:68410-1-Ig, 4ug; Detection:68410-1-Ig 1:2000) with L02 cells lysate 3080 ug.



Immunofluorescent analysis of (4% PFA) fixed HepG2 cells using SYAP1 antibody (68410-1-Ig, Clone: 2E12A5) at dilution of 1:800 and Coralite®488-Conjugated AffiniPure Goat Anti-Mouse IgG(H+L), CL594-Phalloidin (red).