

For Research Use Only

MPI Monoclonal antibody, PBS Only

Catalog Number: 68417-1-PBS



Basic Information

Catalog Number: 68417-1-PBS	GenBank Accession Number: BC046357	Purification Method: Protein G purification
Size: 1 mg/ml	GeneID (NCBI): 4351	CloneNo.: 3B10A6
Source: Mouse	UNIPROT ID: P34949	
Isotype: IgG1	Full Name: mannose phosphate isomerase	
Immunogen Catalog Number: AG5475	Calculated MW: 47 kDa	
	Observed MW: 40-47 kDa	

Applications

Tested Applications:
WB, IP, Indirect ELISA, IF

Species Specificity:
Human, Rat, Pig, Mouse

Background Information

MPI (mannose-6-phosphate isomerase) is also named as PMI 1 and belongs to the mannose-6-phosphate isomerase type 1 family. It is a zinc metalloenzyme that catalyzes the reversible isomerization of mannose-6-phosphate and fructose-6-phosphate. MPI plays a critical role in maintaining the supply of D-mannose derivatives, which are required for most glycosylation reactions. This protein has 2 isoforms produced by alternative splicing.

Storage

Storage:
Store at -80°C.
The product is shipped with ice packs. Upon receipt, store it immediately at -80°C

Storage Buffer:
PBS Only

For technical support and original validation data for this product please contact:

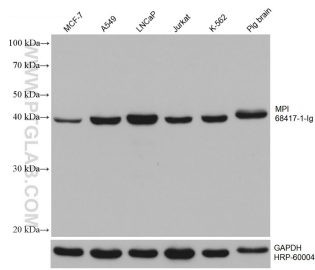
T: 4006900926

E: Proteintech-CN@ptglab.com

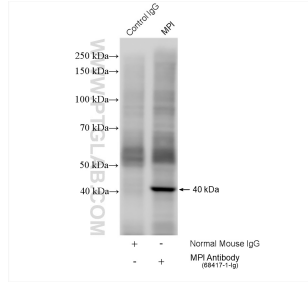
W: ptgcn.com

This product is exclusively available under Proteintech Group brand and is not available to purchase from any other manufacturer.

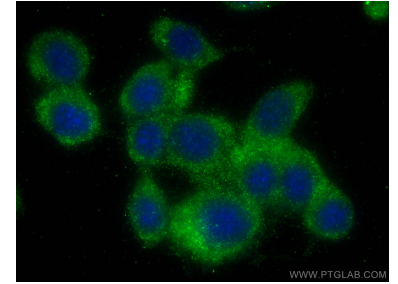
Selected Validation Data



Various lysates were subjected to SDS PAGE followed by western blot with 68417-1-Ig (MPI antibody) at dilution of 1:10000 incubated at room temperature for 1.5 hours. The membrane was stripped and reblotted with HRP-conjugated GAPDH Monoclonal antibody (HRP-60004) as loading control. This data was developed using the same antibody clone with 68417-1-PBS in a different storage buffer formulation.



IP result of anti-MPI (IP:68417-1-Ig, 4ug; Detection:68417-1-Ig 1:2000) with Jurkat cells lysate 2280 ug. This data was developed using the same antibody clone with 68417-1-PBS in a different storage buffer formulation.



Immunofluorescent analysis of (-20°C Methanol) fixed NIH/3T3 cells using MPI antibody (68417-1-Ig, Clone: 3B10A6) at dilution of 1:1000 and CoraLite®488-Conjugated AffiniPure Goat Anti-Mouse IgG(H+L). This data was developed using the same antibody clone with 68417-1-PBS in a different storage buffer formulation.