

For Research Use Only

SSSCA1 Monoclonal antibody, PBS Only



Catalog Number: 68423-1-PBS

Basic Information

Catalog Number: 68423-1-PBS	GenBank Accession Number: BC014791	Purification Method: Protein G purification
Size: 1 mg/ml	GeneID (NCBI): 10534	CloneNo.: 1D2E8
Source: Mouse	UNIPROT ID: O60232	
Isotype: IgG1	Full Name: Sjogren syndrome/scleroderma autoantigen 1	
Immunogen Catalog Number: AG16783	Calculated MW: 199 aa, 21 kDa	
	Observed MW: 23 kDa	

Applications

Tested Applications:
WB, Indirect ELISA, IF

Species Specificity:
Human, mouse, rat

Background Information

SSSCA1, also named as Autoantigen p27, is centromere-associated protein. It may induce anti-centromere antibodies. SSSCA1 plays a role in mitosis. It's involved in Sjogren syndrome/scleroderma. The calculated MW of SSSCA1 is 21.5 kDa (native form), with modification the MW is about 23-27 kDa.

Storage

Storage:
Store at -80°C.
The product is shipped with ice packs. Upon receipt, store it immediately at -80°C

Storage Buffer:
PBS Only

For technical support and original validation data for this product please contact:

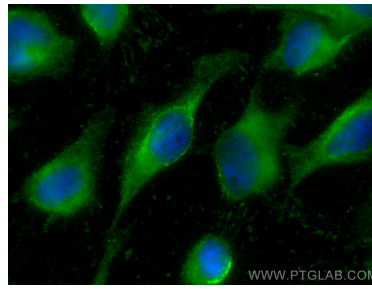
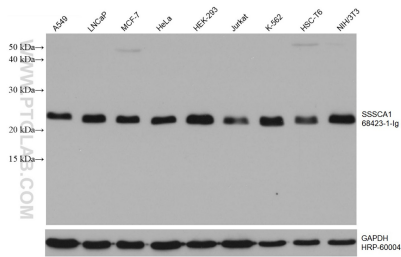
T: 4006900926

E: Proteintech-CN@ptglab.com

W: ptgcn.com

This product is exclusively available under Proteintech Group brand and is not available to purchase from any other manufacturer.

Selected Validation Data



Various lysates were subjected to SDS PAGE followed by western blot with 68423-1-Ig (SSSCA1 antibody) at dilution of 1:5000 incubated at room temperature for 1.5 hours. The membrane was stripped and reblotted with HRP-conjugated GAPDH Monoclonal antibody (HRP-60004) as loading control. This data was developed using the same antibody clone with 68423-1-PBS in a different storage buffer formulation.

Immunofluorescent analysis of (-20°C Methanol) fixed HeLa cells using SSSCA1 antibody (68423-1-Ig, Clone: 1D2E8) at dilution of 1:400 and CoraLite®488-Conjugated AffiniPure Goat Anti-Mouse IgG(H+L). This data was developed using the same antibody clone with 68423-1-PBS in a different storage buffer formulation.