

For Research Use Only

Centrin 1 Monoclonal antibody

Catalog Number: 68433-1-Ig



Basic Information

Catalog Number:

68433-1-Ig

Size:

1000 µg/ml

Source:

Mouse

Isotype:

IgG2b

Immunogen Catalog Number:

AG3529

GenBank Accession Number:

BC029515

GeneID (NCBI):

1068

UNIPROT ID:

Q12798

Full Name:

centrin, EF-hand protein, 1

Calculated MW:

172 aa, 20 kDa

Observed MW:

20 kDa

Purification Method:

Protein A purification

CloneNo.:

1G8D10

Recommended Dilutions:

IF 1:250-1:1000

Applications

Tested Applications:

IF/ICC, ELISA

Species Specificity:

Human

Positive Controls:

IF : hTERT-RPE1 cells, ARPE-19 cells

Background Information

EF-hand type Ca²⁺-binding proteins consists of several family members, including Centrin-1, Centrin-2 and Centrin-3. The Centrin proteins are ubiquitously expressed cytoskeletal components that show increased expression during cell differentiation. Centrin-1 plays important roles in the determination of centrosome position and segregation, and in the process of microtubule severing. Centrin-1 is localized to the centrosome of interphase cells, and redistributes to the region of the spindle poles during mitosis, reflecting the dynamic behavior of the centrosome during the cell cycle.

Storage

Storage:

Store at -20°C. Stable for one year after shipment.

Storage Buffer:

PBS with 0.02% sodium azide and 50% glycerol pH 7.3.

Aliquoting is unnecessary for -20°C storage

For technical support and original validation data for this product please contact:

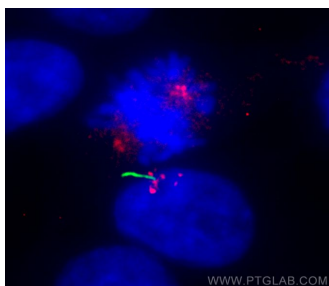
T: 4006900926

E: Proteintech-CN@ptglab.com

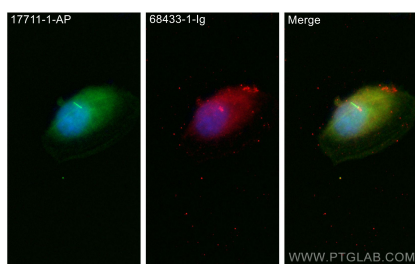
W: ptgcn.com

This product is exclusively available under Proteintech Group brand and is not available to purchase from any other manufacturer.

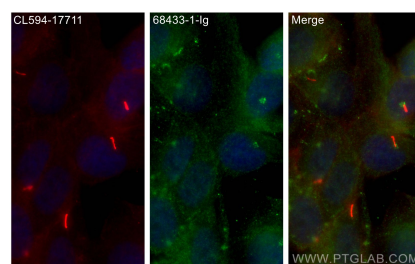
Selected Validation Data



Immunofluorescent analysis of (4% PFA) fixed hTERT-RPE1 cells using CETN1 antibody (68433-1-Ig, Clone: 1G8D10) at dilution of 1:500 and CoraLite@488-Conjugated AffiniPure Goat Anti-Mouse IgG(H+L).



Immunofluorescent analysis of (4% PFA) fixed ARPE-19 cells using CETN1 antibody (68433-1-Ig, Clone: 1G8D10) at dilution of 1:500 and CoraLite@488-Conjugated AffiniPure Goat Anti-Mouse IgG(H+L).



Immunofluorescent analysis of (4% PFA) fixed hTERT-RPE1 cells using CETN1 antibody (68433-1-Ig, Clone: 1G8D10) at dilution of 1:300 and CoraLite@488-Conjugated AffiniPure Goat Anti-Mouse IgG(H+L).