

For Research Use Only

# CSNK1A1 Monoclonal antibody, PBS Only



Catalog Number: 68434-1-PBS

## Basic Information

<b>Catalog Number:</b> 68434-1-PBS	<b>GenBank Accession Number:</b> NM_001892	<b>Purification Method:</b> Protein G purification
<b>Size:</b> 1 mg/ml	<b>GeneID (NCBI):</b> 1452	<b>CloneNo.:</b> 1E2E7
<b>Source:</b> Mouse	<b>UNIPROT ID:</b> P48729	
<b>Isotype:</b> IgG1	<b>Full Name:</b> casein kinase 1, alpha 1	
	<b>Calculated MW:</b> 42 kDa	
	<b>Observed MW:</b> 30-40 kDa	

## Applications

**Tested Applications:**  
WB, Indirect ELISA

**Species Specificity:**  
Human, Rat, Mouse

## Background Information

CSNK1A1, also named as CK1, belongs to the protein kinase superfamily, CK1 Ser/Thr protein kinase family and Casein kinase I subfamily. Casein kinases are operationally defined by their preferential utilization of acidic proteins such as caseins as substrates. CSNK1A1 can phosphorylate a large number of proteins. It participates in Wnt signaling. CSNK1A1 phosphorylates CTNNB1 at 'Ser-45'. May play a role in segregating chromosomes during mitosis. This antibody is specific to CSNK1A1.

## Storage

**Storage:**  
Store at -80°C.

**Storage Buffer:**  
PBS Only

For technical support and original validation data for this product please contact:

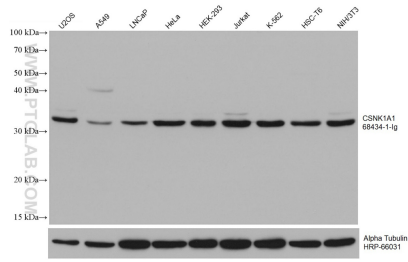
T: 4006900926

E: [Proteintech-CN@ptglab.com](mailto:Proteintech-CN@ptglab.com)

W: [ptgcn.com](http://ptgcn.com)

**This product is exclusively available under Proteintech Group brand and is not available to purchase from any other manufacturer.**

## Selected Validation Data



Various lysates were subjected to SDS PAGE followed by western blot with 68434-1-Ig (CSNK1A1 antibody) at dilution of 1:10000 incubated at room temperature for 1.5 hours. The membrane was stripped and reblotted with HRP-conjugated Alpha Tubulin Monoclonal antibody (HRP-66031) as loading control. This data was developed using the same antibody clone with 68434-1-PBS in a different storage buffer formulation.